

Public Involvement

Public involvement is a key component of any community-wide bikeway study, as feedback from actual users of a network can often provide information field visits and data analysis cannot. Soliciting feedback from the public at-large and various volunteer groups and stakeholders involved with the project was a major focus of the report, in various stages. There were a number of methods utilized to gather information from the residents of Voorhees, including: an online survey tool, community mapping website, public information/input session, and meetings with local volunteer groups and interested stakeholders

..

Steering Committee & Stakeholder Meetings

The local steering committee for this project was composed of volunteers from VECEF (the Voorhees Environmental and Cultural Education Foundation), a group of concerned local residents dedicated to maintaining a livable community in Voorhees, Rutgers CUES, Cross County Connection, and Township officials.

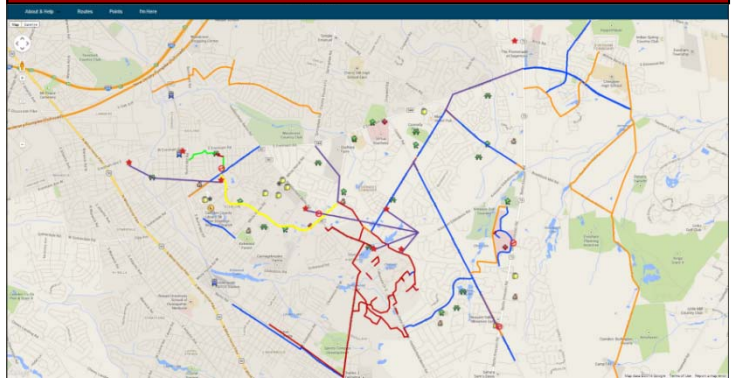
Monthly meetings of the local 'Steering Committee' were held to keep all stakeholders abreast of the development of the existing conditions analysis, report, and mapping. Another main goal of these meetings was to help guide recommendations for the project, per input from the interested stakeholders. These meetings were held monthly for the duration of the project (from April 2013 to May 2014). The steering committee also provided anecdotal information throughout the project.

Members of the Steering Committee and other volunteer organizations in Voorhees also helped contributed to the GIS data collection that resulted in the surveyed base map for the study area.

Online Community Survey and Mapping


Through the efforts of the project team – mainly Cross County Connection – opportunities were provided to the public to interactively identify problem areas within the Township, potential connections and pathways they would like to see, and problems they encountered while utilizing the Township's existing Bicycle Network.

Figure | Online Community Mapping



The public was given the opportunity to participate in an interactive mapping session in two different ways. At a public information session, attendees were given the opportunity to identify, on a large overall map, desired destinations, barriers to bicycling or dangerous areas, and places where they would like to see bikeways. Additionally, the public was given a similar opportunity to map via an online survey/mapping tool that allowed them to provide comments and feedback in much the same fashion as the public information session. Four individuals provided a total of 27 comments on the online map and roughly 10 public forum attendees participated in the interactive mapping session.


Additionally, an online survey was provided by Cross County Connection, which gathered information from respondents on a variety of topics, including bicycling experience, challenges and barriers to bicycling, preferred bicycle infrastructure, and various other pedestrian/bicycle improvements. The results of the survey and mapping sessions can be found in the summary report generated by Cross County Connection in the Appendix.



VOORHEES
TOWNSHIP
www.voorheesnj.com


Public Forum

Tuesday, December 17th
7:00 pm - 9:00 pm

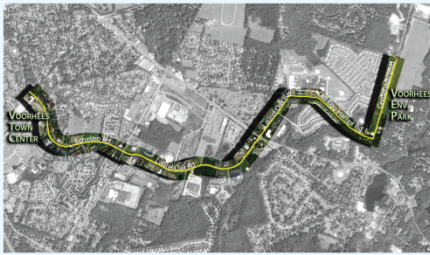


Creating a More Bicycle & Pedestrian Friendly Voorhees

Voorhees Municipal Town Hall
2400 Voorhees Town Center (Next to Macy's)
2nd Floor Courtroom



THE STUDY AREA




Voorhees residents, bicyclists, business owners and their employees are invited to this forum to provide input on:

- Creating a safe bicycle and pedestrian linkage between the Voorhees Town Center and the future site of the Voorhees Environmental Park.
- Improving the overall bikeway network linkages between the western, central and eastern sections of Voorhees Township.
- Possible methods to improve pedestrian & bicyclists' safety on Echelon Rd., Laurel Oak Rd. and Centennial Blvd.

Public forum participants will:

- Engage with project planners in face to face discussions
- Take part in an interactive mapping session
- Learn about the latest advancements in bicycle and pedestrian infrastructure
- Visit www.bikeplan.org/voorhees for more information about this project or to take part in an on-line survey



This study is being funded by the Federal Highway Administration (FHWA) through the Delaware Valley Regional Planning Commission's (DVRPC) Transportation and Community Development Initiative (TCDI) Program. For questions regarding this project and public meeting please contact Cross County Connection at 856-596-5228.

Figure | Public Info Session Flyer

www.vccet.org www.cues.rutgers.edu www.sustainablevoorhees.org www.driveless.com

Public Information Sessions

Two public information sessions were held over the course of the project. The first was on December 17, 2013 to both inform residents of the nature of the project and information gathered to that point, as well as solicit input from them on the direction and nature of recommendations to be included within the report. Stakeholders part of the Steering Committee also attended, often providing additional information on portions of the project. For example, CUES was present to discuss the plans for the proposed Environmental Park, and Cross County Connection provided the interactive mapping session as well as a wealth of information regarding typical bikeway/pedestrian treatments. The session was held at an Environmental Commission meeting in Voorhees Town Center, and was advertised through the Township's website, Cross County Connection's website, and flyer handouts. The session provided a forum for the public to both learn and contribute to the development of the report. A series of display boards soliciting feedback on overall bike path recommendations, traffic calming treatments, and streetscaping concepts for Centennial Boulevard were utilized to inform and gather input. Attendees were asked to complete a comment form to document their feedback on the study findings.

The second public meeting was held on May 13, 2014, to present the findings of the report to the public and Township officials. The presentation took place at a

meeting of the Environmental Commission. Stakeholders and the general public also attended the meeting. The general findings of the report were presented in PowerPoint format, and all attendees were given the chance to provide feedback on recommendations prior to the finalization of the report.

Figure | Cross County Connection Generated Study Corridor Mapping

