



YOUR GOALS. OUR MISSION.

UNCO-00600

February 25, 2016

Ms. Amy Wagner – Acting Director  
Department of Economic Development  
County of Union  
Administration Building  
Elizabeth, New Jersey 07207

**Re: Passaic River De-Snagging Project  
Response to Bernard's Township**

Dear Ms. Wagner:

Per the request of Mr. Bruce McArthur from Bernard's Township on February 9, 2016, please see the attached GPS coordinate cut sheets as well as before and after photographs of the trees that were removed from the portion of the Passaic River between Long Hill Township and Bernards Township.

There were a total of 28 full river snags removed in this section. The contract documents required the removal of 19 trees within the area of these two municipalities and the contractor removed an additional 9 full river snags. Please note that the entire project required the removal of a total of 64 trees.

Also, please note, that when Bernards Township offered an additional \$15,000.00 towards the project, the project team added trees BT9A, BT10A, BT11A, BT12A and BT13A which were originally not included and extended the project limits into the "Gorge". All the trees that were promised to be removed in the Bernards Township section of the project were completely removed as well as 7 additional trees within the "Gorge" area that were accessed from Mr. Behr's property due to access constraints from the Bernards side of the river. Please note that all stakeholders were made aware that all snags would not be removed before the project started.

It should also be noted that the water elevation did not prohibit the contractor from seeing or removing any of the snags. The trees were visible from the shoreline and were pulled from the river, cut into pieces and loaded into a dumpster for disposal.

If you have any questions or require any additional information, please do not hesitate to contact me directly.

Very truly yours,

T & M ASSOCIATES

KRISTOPHER J. KRZYSTON  
GROUP MANAGER  
COMPLIANCE AND PERMITTING

KJK:lkc  
Encl.

cc: Neil Henry, Long Hill Township Administrator  
Tom Mineo, PE, Union County Engineer  
Raymond Sullivan, PE Union County Project Manager  
Robert Gregoria, PE, Project Engineer  
Ryan Garner, T&M Associates

H:\UNCO\00600\Correspondence\A Wagner - Response to Bernards Township Comments 2-24-16 Final.docx



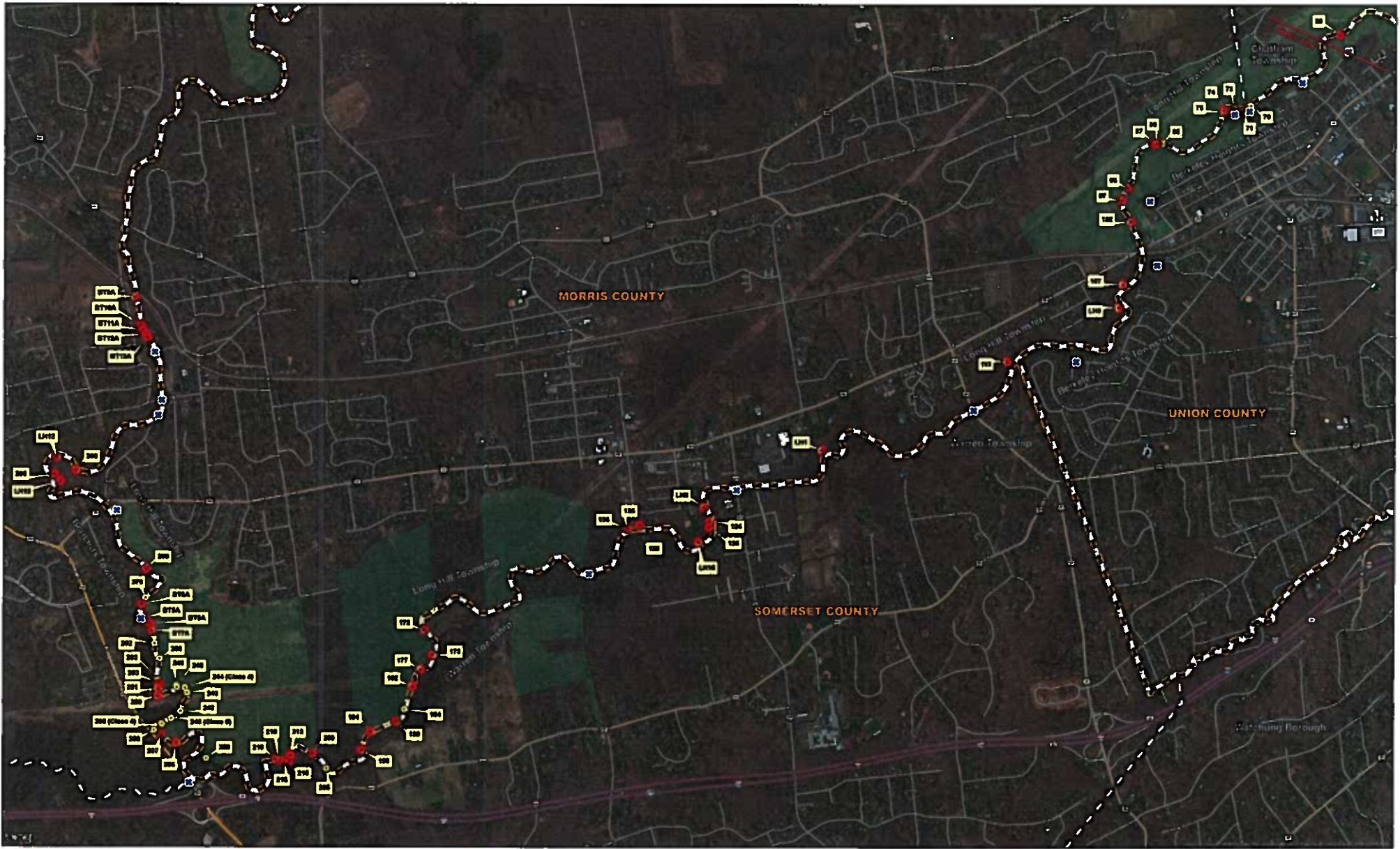
Trees Removed Per Plan: 64

Extra Trees Removed: 9

135	40.66369	-74.49058	full river width		(135/136) Cluster of trees, Two After Photos
136	40.66369	-74.49058	full river width		
172	40.657804	-74.505857	full river width		
173	40.656365	-74.505244	full river width		
177	40.655483	-74.506135	full river width	no tree	(177) no tree
182	40.654554	-74.506748	full river width	no tree	(182) no tree
189	40.652502	-74.507961	full river width		
194	40.651896	-74.509889	full river width		(194/199) Cluster of trees, One After Photo
199	40.650882	-74.51056	full river width		
209	40.650663	-74.514243	full river width		
213	40.650558	-74.515913	full river width	bad gps recep	(213) Tree found and removed
215	40.650224	-74.515998	full river width		(215/216/218/219) Cluster of trees, Three After Photos
216	40.6502	-74.516336	full river width		
218	40.650294	-74.516784	full river width		
219	40.650326	-74.51704	full river width		
235	40.651236	-74.524494	full river width		
237	40.651686	-74.525585	full river width		
250	40.653969	-74.525926	full river width		
251	40.654397	-74.525902	full river width		(251) Removed 2 extra trees not on Plan +2
253	40.654639	-74.525808	full river width		
BT 7A	40.657734	-74.526335	full river width		
BT6A	40.658151	-74.526549	full river width		
BT 5A	40.658477	-74.526855	full river width		
BT 8A	40.659229	-74.527136	full river width		
280	40.661282	-74.526785	full river width		
LH 13	40.66637	-74.53327	full river width		(LH13) Removed 1 extra tree not on Plan +1
290	40.66676	-74.53372	full river width		
LH 12	40.66777	-74.53355	full river width	no tree	(LH12) Tree found and removed
293	40.66699	-74.5321	full river width		(293) Removed 3 extra trees not on Plan +3
BT 13A	40.674745	-74.526773	full river width		(BT13A) Removed 1 extra tree not on Plan +1
BT 12A	40.674935	-74.526926	full river width		(BT12A) Removed 1 extra tree not on Plan +1
BT 11A	40.675173	-74.827113	full river width		(BT11A, BT10A) Cluster of trees, One after photo, Removed 1 extra tree not on Plan +1
BT 10A	40.675446	-74.527281	full river width		
BT 9A	40.677053	-74.527728	full river width		

19

9




 T&M Associates  
 31 Tuckahoe Road  
 Morristown, NJ 07960-2702  
 Phone: 732-671-6400  
 Fax: 732-671-7266  
 Prepared by: JSC, APRIL 2010, last update: 07/20/2010  
 Review: NJ Counties and Municipal Governments  
 Municipal and County GISD Data, NAD83  
 File Path: H:\L\GIS\Projects\MapServer\Concept Map Web.mxd

 Access Points	 County Open Space
 Class 3 Snags to be Removed	 Municipal Boundary
 Class 3 Snags to Remain	 County Boundary



0    1,250    2,500    5,000  
 Feet  
 1 inch equals 833 feet

**Stream Cleaning and De-snagging Project**  
**Class 3 Snags- Full River Width**  
**Study Area- Western Extent**  
**Union, Morris and Somerset Counties, NJ**  
NOTE: This map was developed using the county Department of Environmental Protection Geographic Information System dated 2010, but the preliminary product has not been verified by NJDEP and is not State-certified.

Location 235

Tree removed

<http://maps.google.com/?q=40.65126,-74.52447>

Latitude : 40.651259

Longitude : -74.524471

Altitude : 249 feet

Accuracy of GPS signal : 16 feet

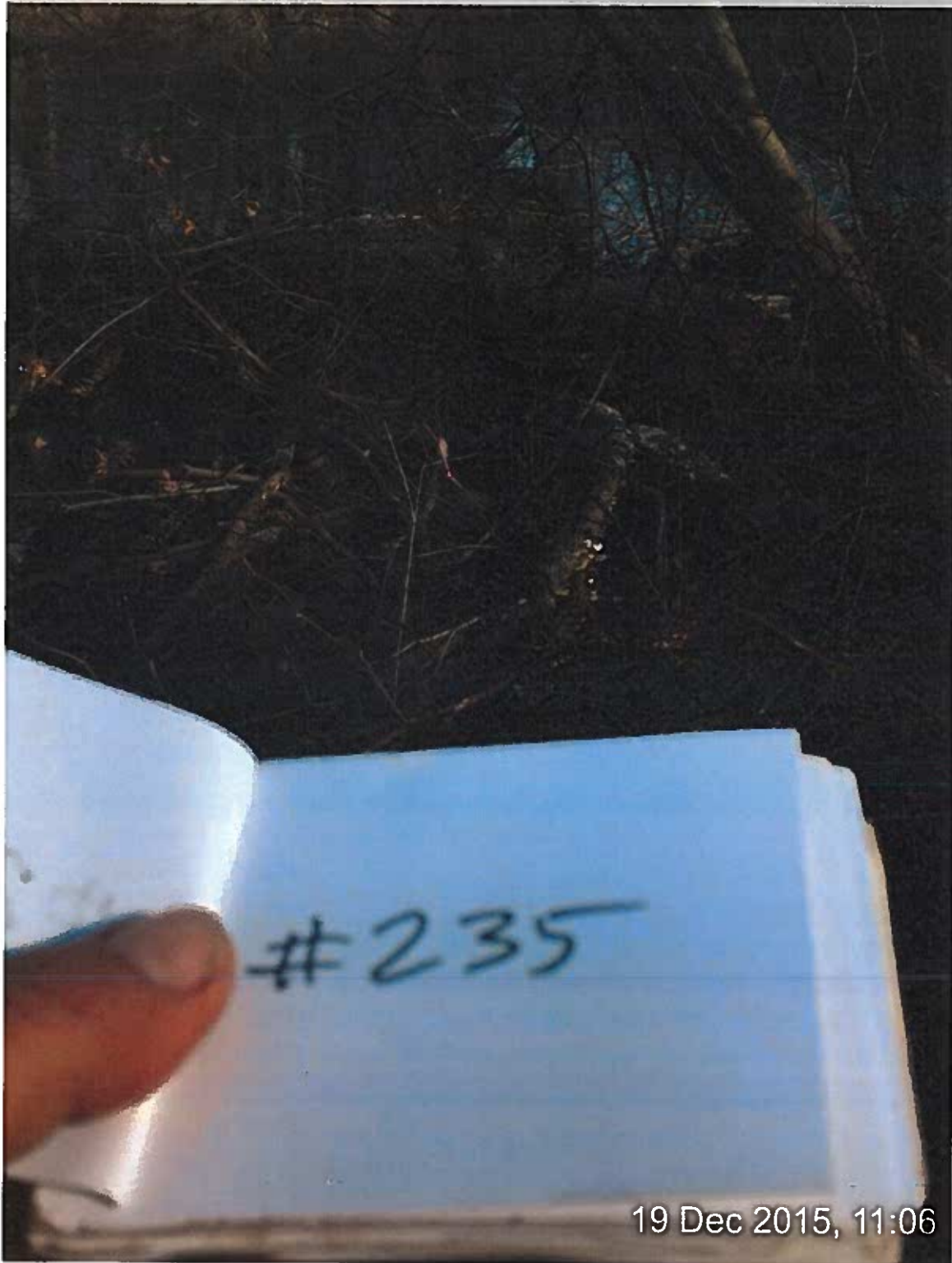
12/19/15, 11:04 AM

40.651259,-74.524471

**BEFORE**

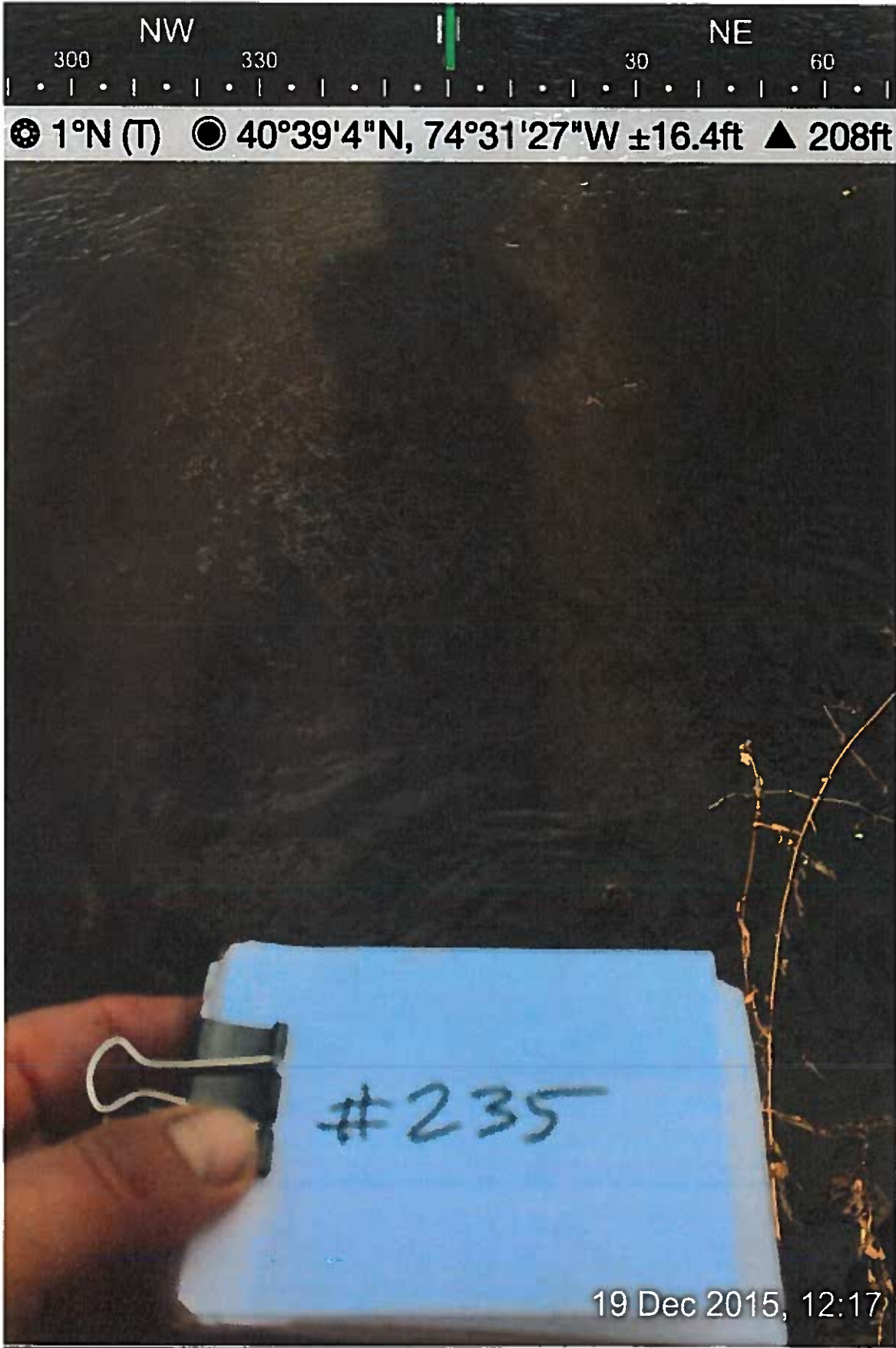


⊙ 40°NE (T) ● 40°39'4"N, 74°31'27"W ±16.4ft ▲ 242ft



19 Dec 2015, 11:06

**AFTER**



Location 237

Tree removed

<http://maps.google.com/?q=40.65159,-74.52567>

Latitude : 40.651586

Longitude : -74.525671

Altitude : 212 feet

Accuracy of GPS signal : 16 feet

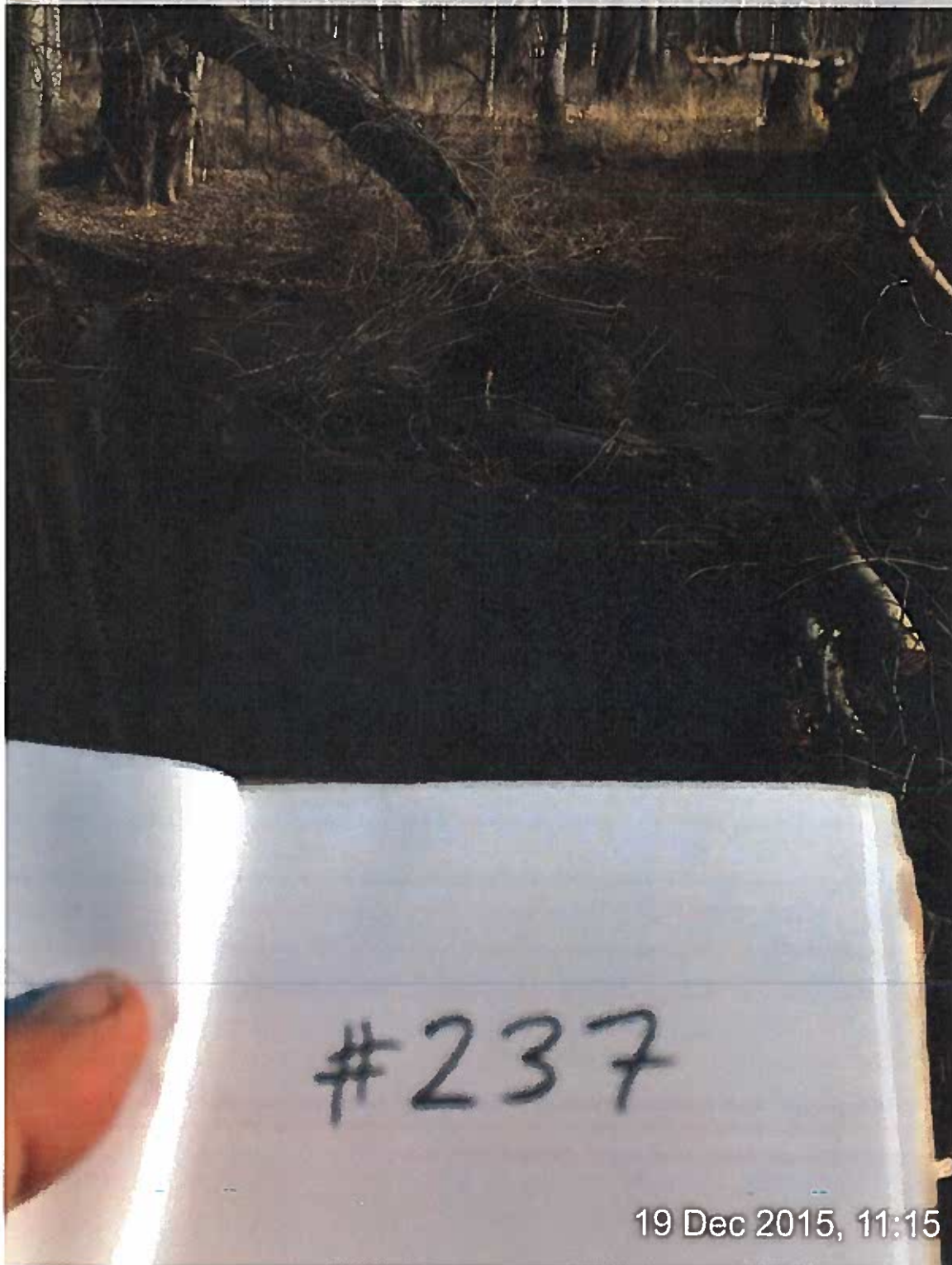
12/19/15, 11:15 AM

40.651586,-74.525671

BEFORE



⊙ 50°NE (T)   ⊙ 40°39'5"N, 74°31'32"W ±16.4ft   ▲ 228ft



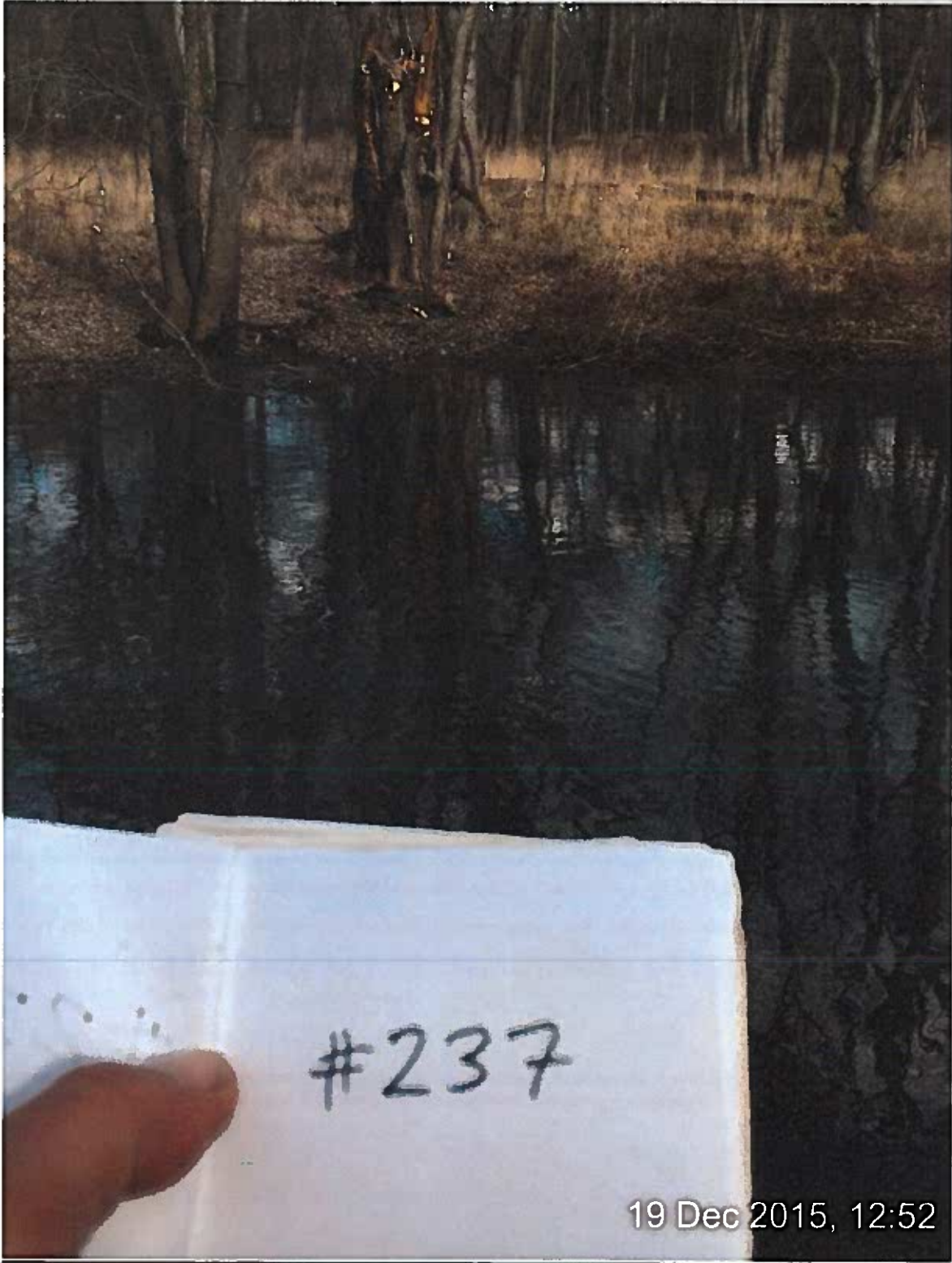
19 Dec 2015, 11:15



**AFTER**



☉ 25°NE (T) ● 40°39'6"N, 74°31'33"W ±16.4ft ▲ 257ft



19 Dec 2015, 12:52

Location 250

Tree removed

<http://maps.google.com/?q=40.65390,-74.52580>

Latitude : 40.653896

Longitude : -74.525798

Altitude : 209 feet

Accuracy of GPS signal : 16 feet

12/19/15, 12:34 PM

40.653896,-74.525798

BEFORE



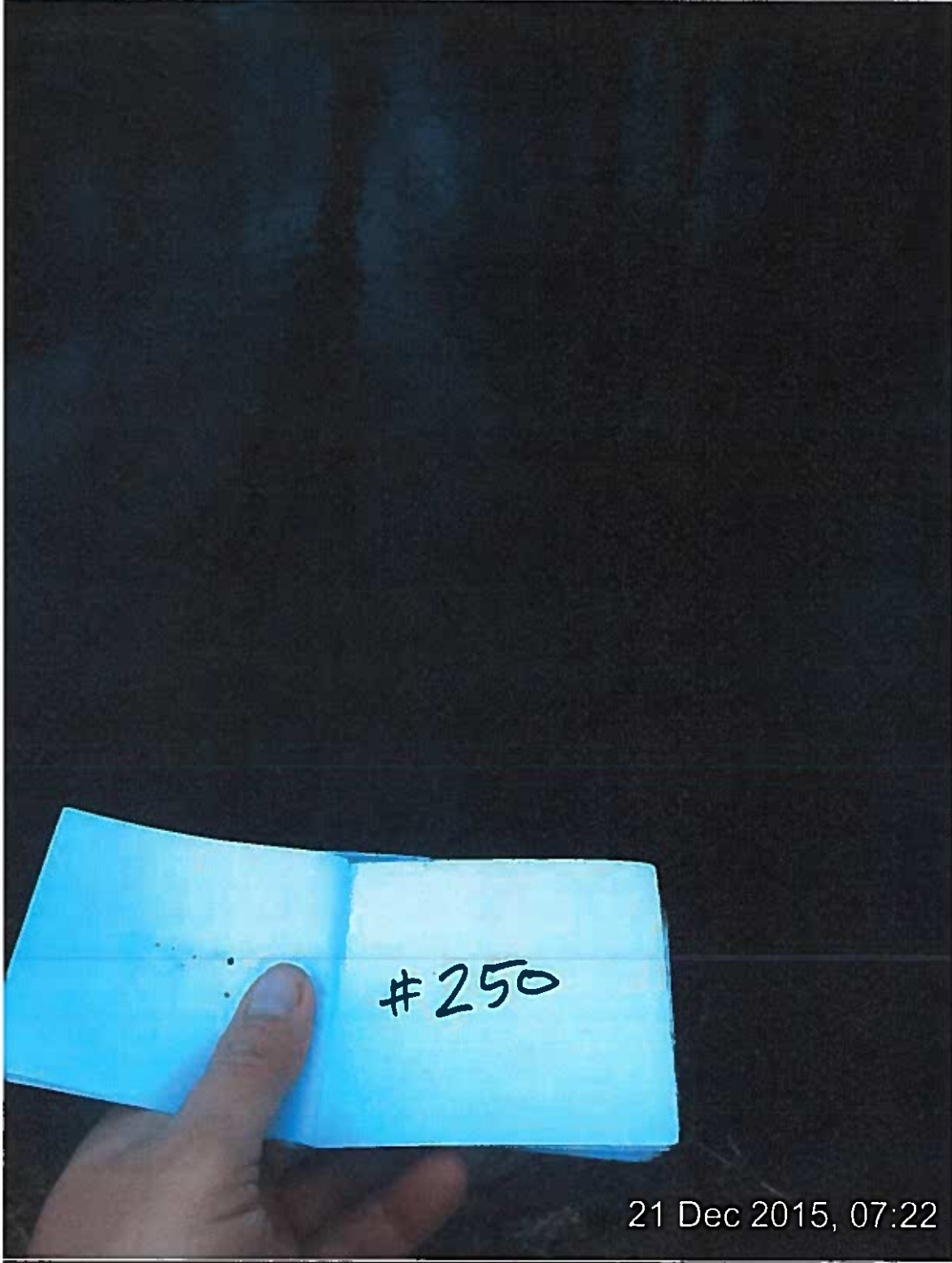
#250

19 Dec 2015, 12:35

AFTER



☉ 310°NW (T)    ☉ 40°39'13"N, 74°31'32"W ±16.4ft    ▲ 215ft



21 Dec 2015, 07:22

Location 251

Had to remove two additional trees that were holding 251 to be able to remove #251

<http://maps.google.com/?q=40.65448,-74.52587>

Latitude : 40.654484

Longitude : -74.525875

Altitude : 285 feet

Accuracy of GPS signal : 16 feet

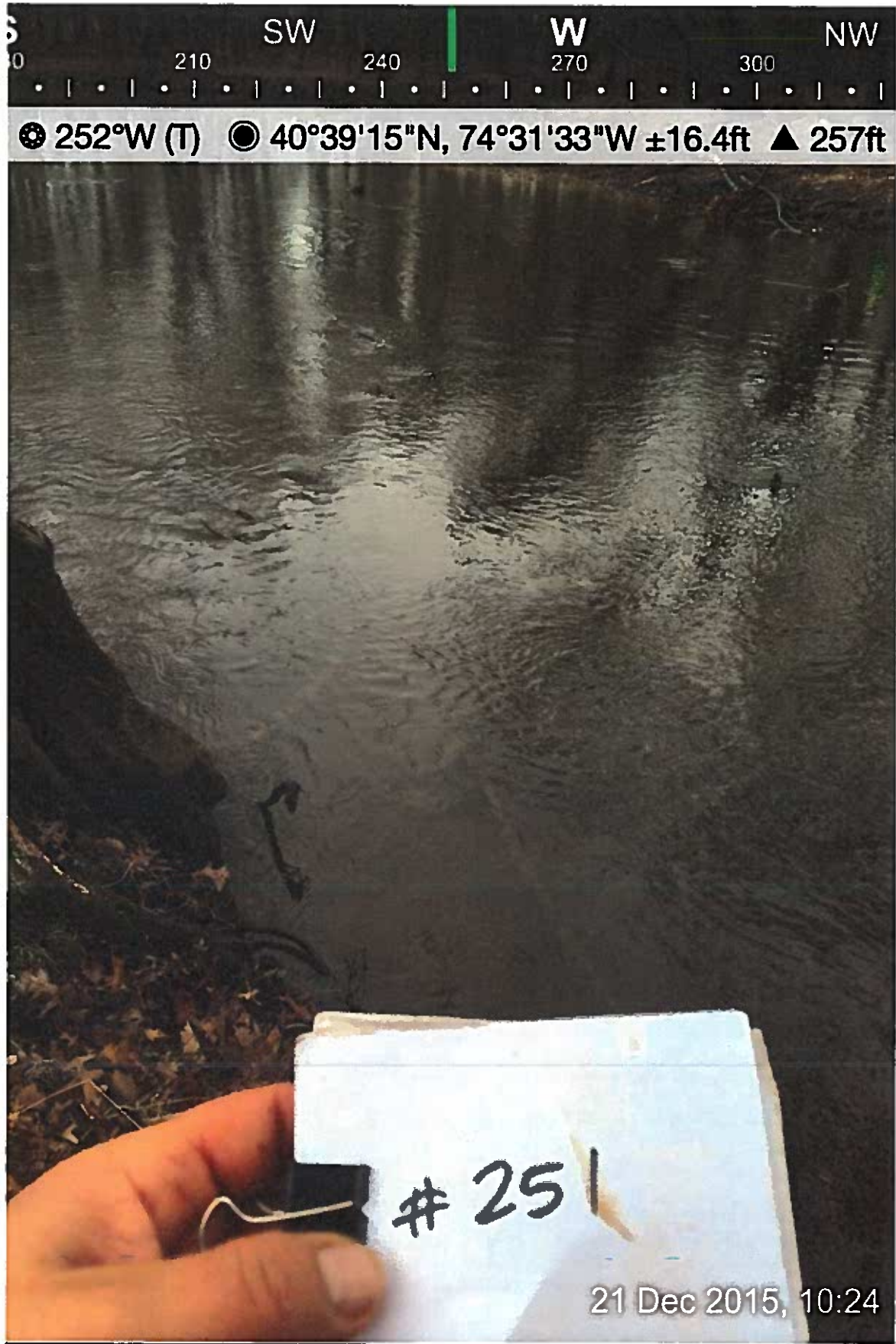
12/21/15, 8:02 AM

40.654484,-74.525875

**BEFORE**



**AFTER**



Location 253

Tree removed

<http://maps.google.com/?q=40.65463,-74.52583>

Latitude : 40.654630

Longitude : -74.525827

Altitude : 251 feet

Accuracy of GPS signal : 16 feet

12/21/15, 8:06 AM

40.654630,-74.525827



BEFORE

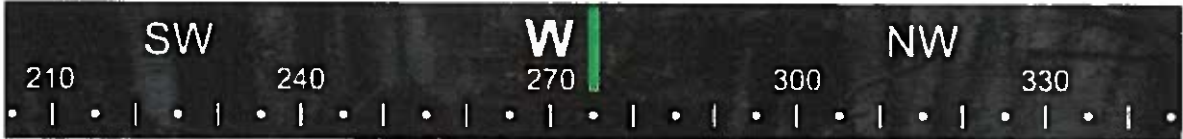


⊙ 283°W (T)   ⊙ 40°39'16"N, 74°31'33"W ±16.4ft   ▲ 252ft

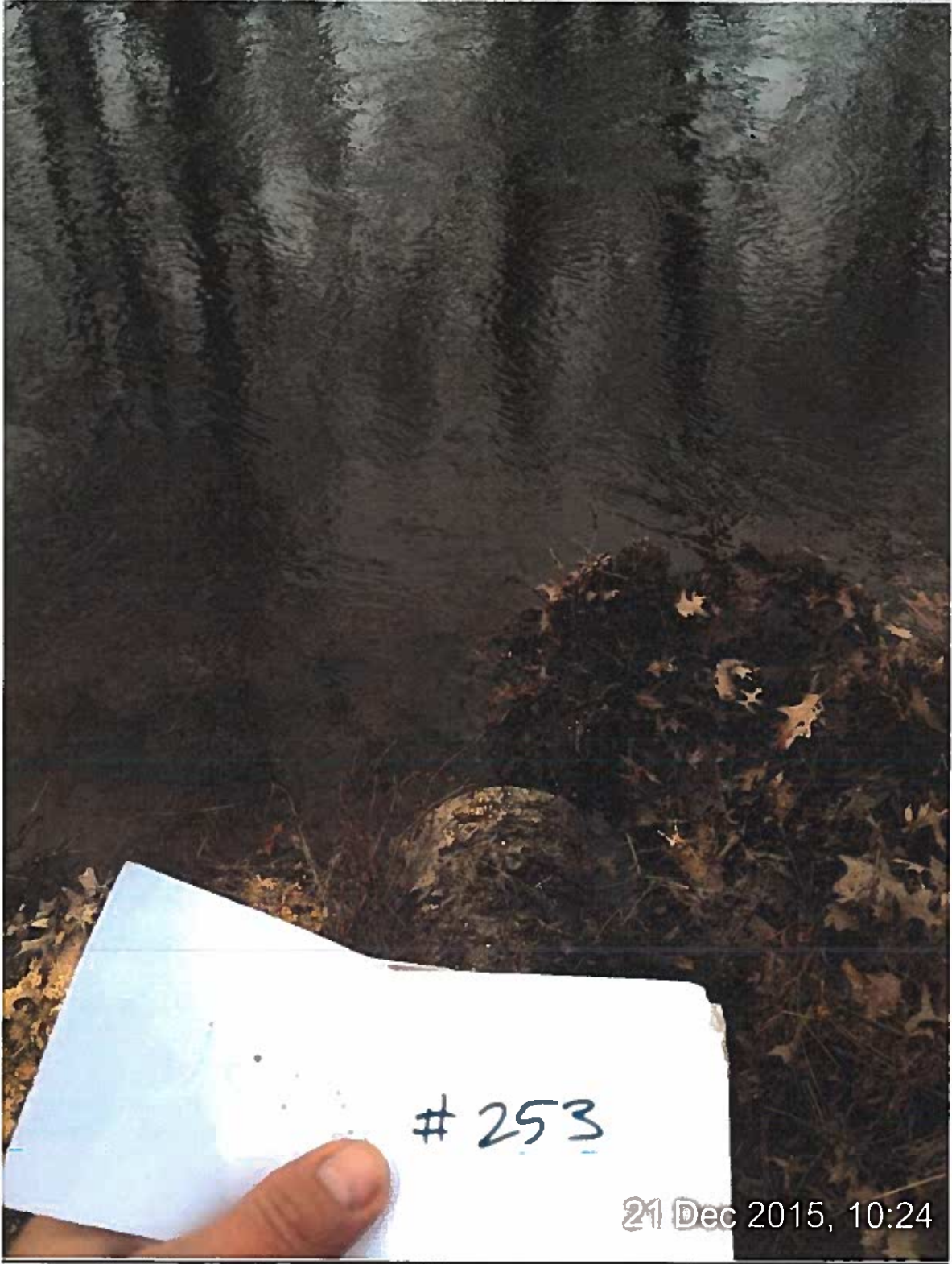


21 Dec 2015, 08:06

**AFTER**



⊙ 276°W (T)   ⊙ 40°39'16"N, 74°31'33"W ±16.4ft   ▲ 237ft



# 253

21 Dec 2015, 10:24

Location bt5a

Tree removed

<http://maps.google.com/?q=40.65850,-74.52673>

Latitude : 40.658500

Longitude : -74.526729

Altitude : 241 feet

Accuracy of GPS signal : 16 feet

12/21/15, 10:48 AM

40.658500,-74.526729

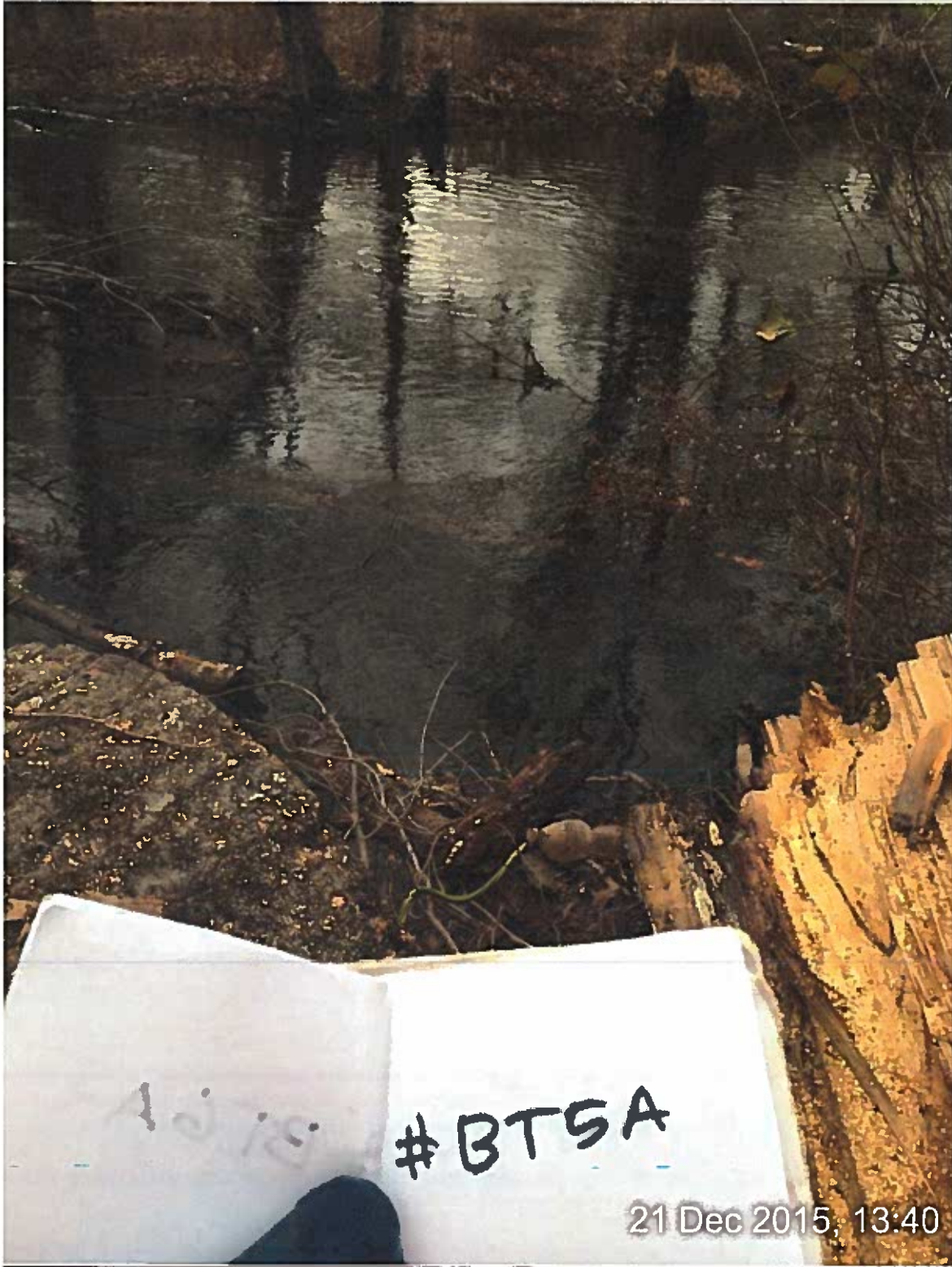
**BEFORE**



**AFTER**



⊙ 250°W (T)   ⊙ 40°39'30"N, 74°31'36"W ±16.4ft   ▲ 255ft



A. J. T. S.

# BTSA

21 Dec 2015, 13:40

Location bt6a

Tree removed

<http://maps.google.com/?q=40.658188,-74.526510>

Latitude : 40.658188

Longitude : -74.526510

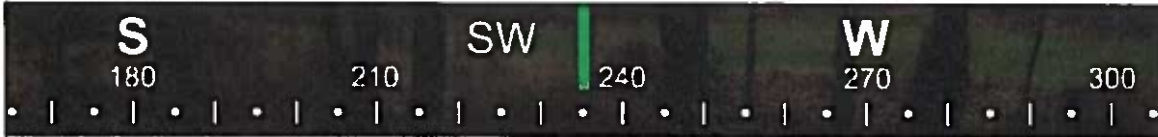
Altitude : 212 feet

Accuracy of GPS signal : 16 feet

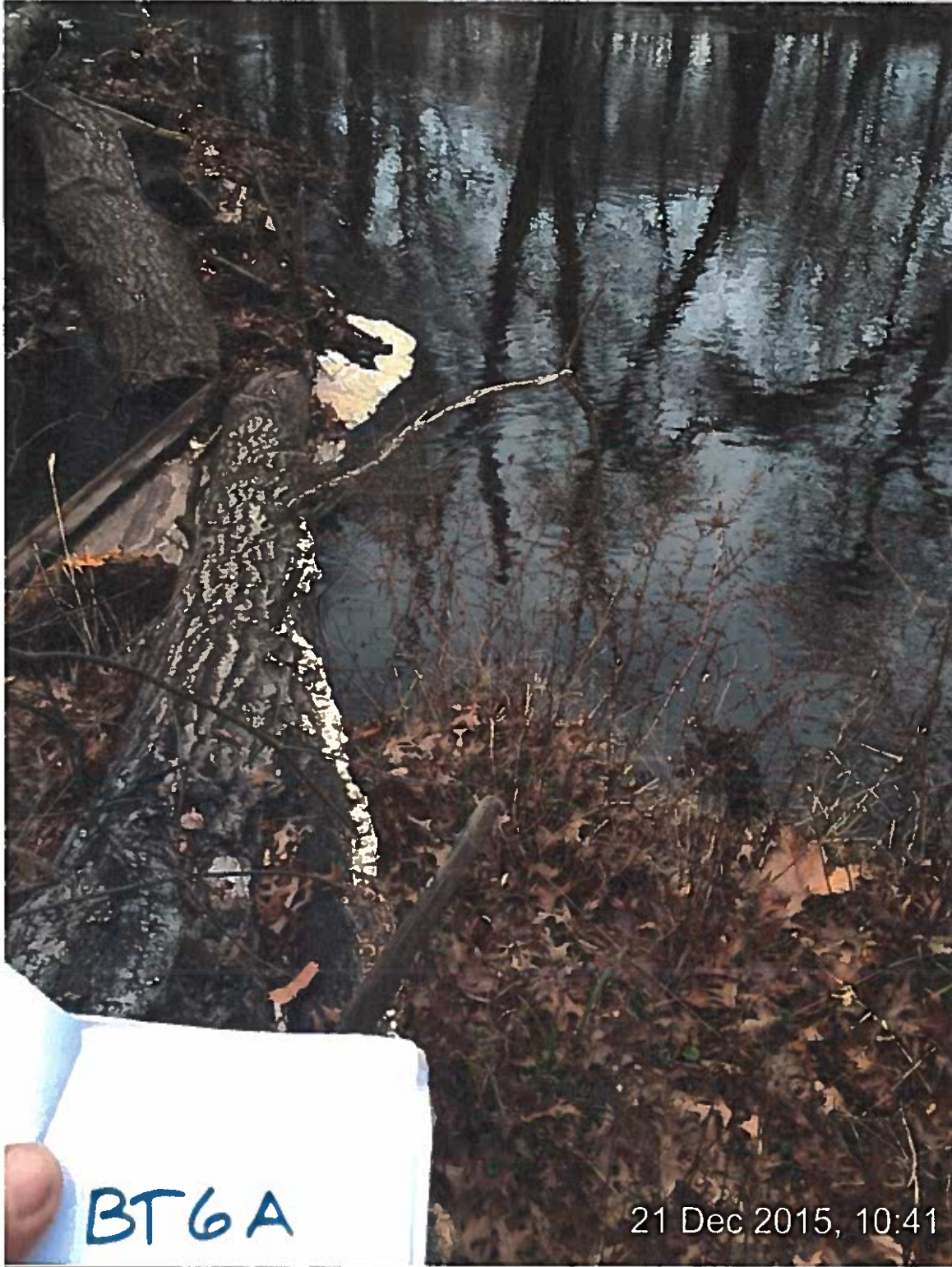
12/21/15, 10:40 AM

40.658188,-74.526510

**BEFORE**



⊙ 236°SW (T)   ⊙ 40°39'29"N, 74°31'35"W ±16.4ft   ▲ 214ft

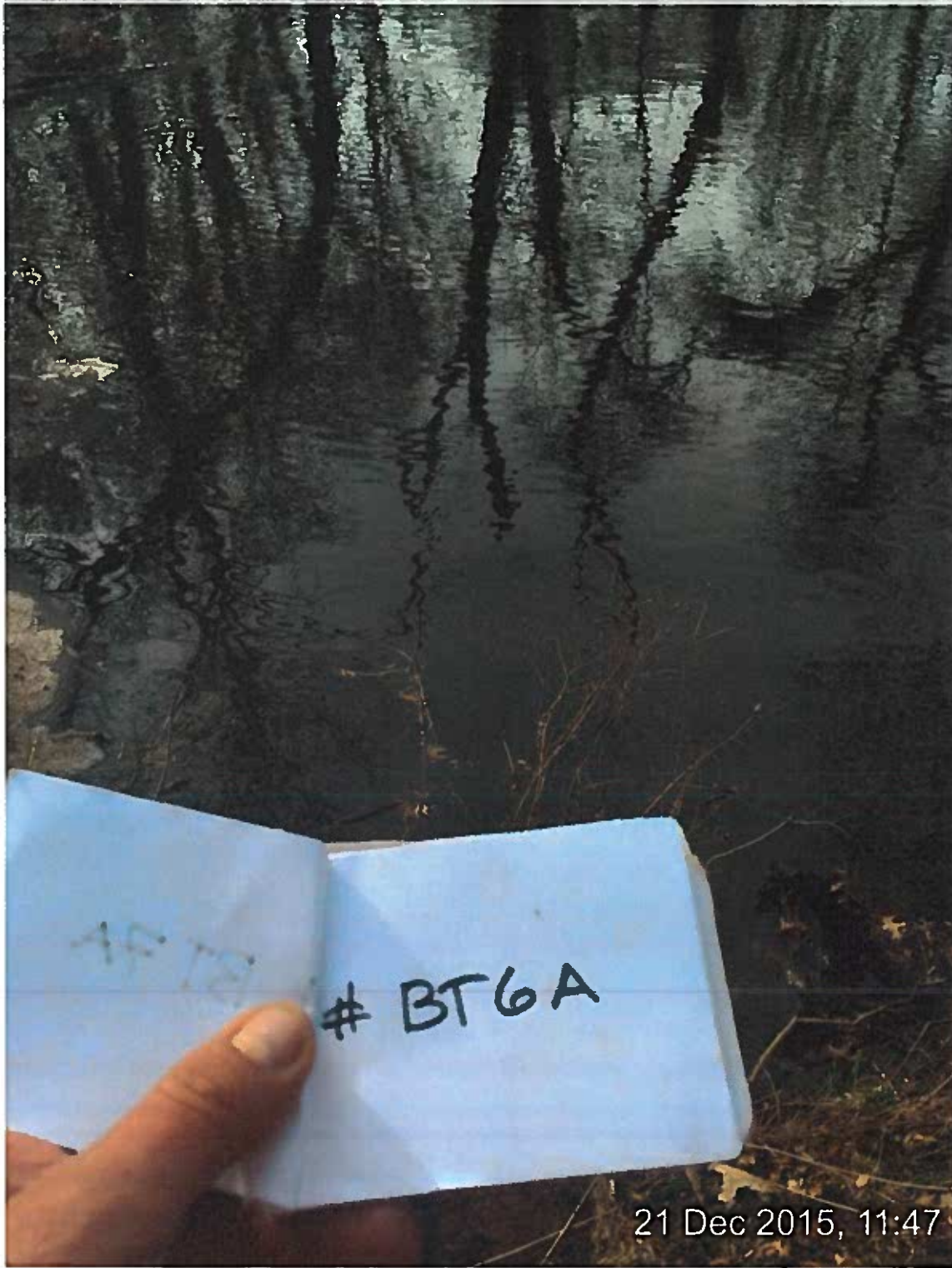


21 Dec 2015, 10:41

AFTER



⊙ 240°SW (T) ● 40°39'29"N, 74°31'35"W ±16.4ft ▲ 271ft



21 Dec 2015, 11:47



Location bt7a

Tree submerged

Tree removed

<http://maps.google.com/?q=40.65787,-74.52634>

Latitude : 40.657870

Longitude : -74.526341

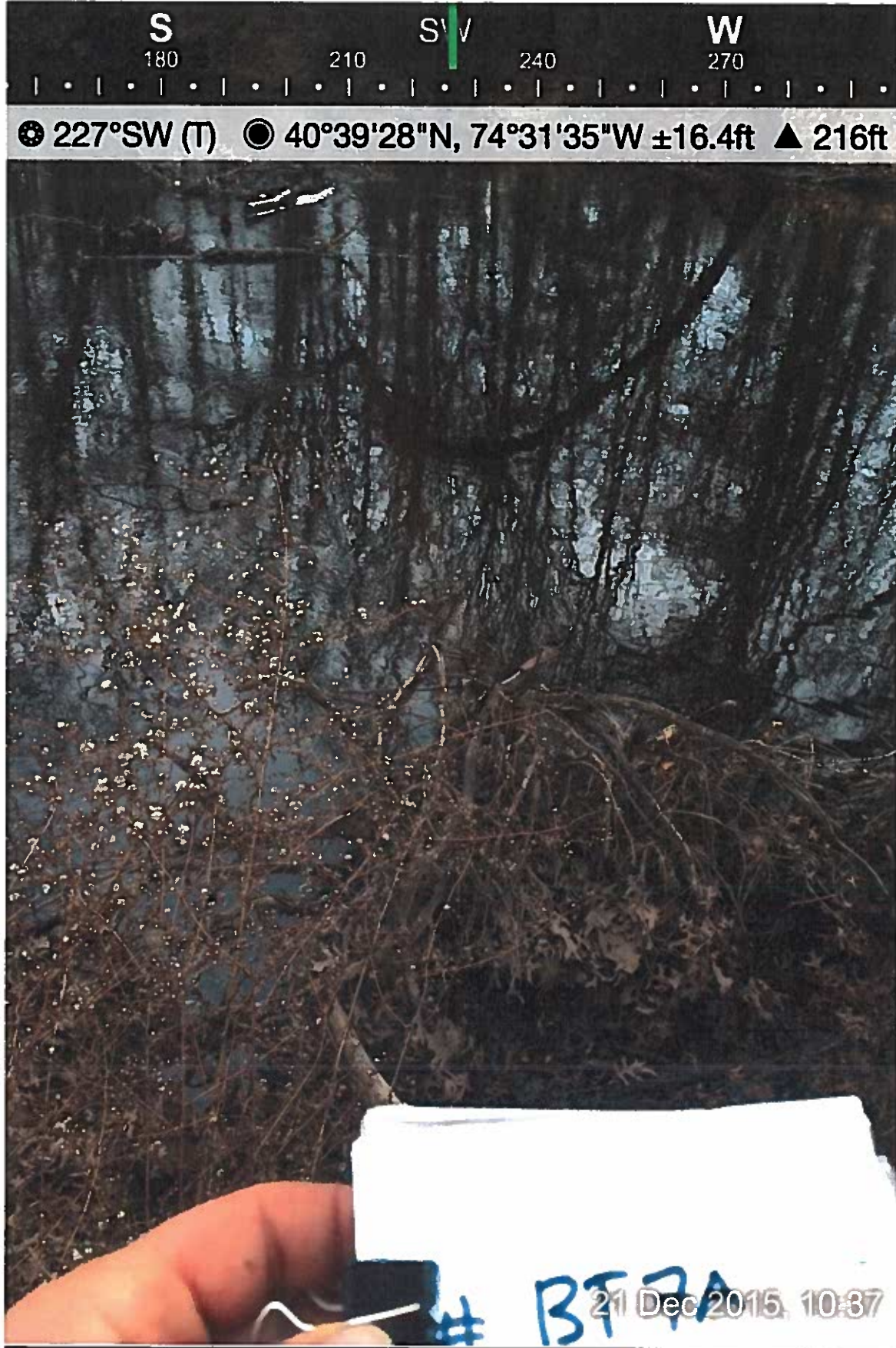
Altitude : 239 feet

Accuracy of GPS signal : 16 feet

12/21/15, 10:36 AM

40.657870,-74.526341

**BEFORE**



**BEFORE**



⊙ 238°SW (T)    ● 40°39'29"N, 74°31'35"W ±16.4ft    ▲ 212ft



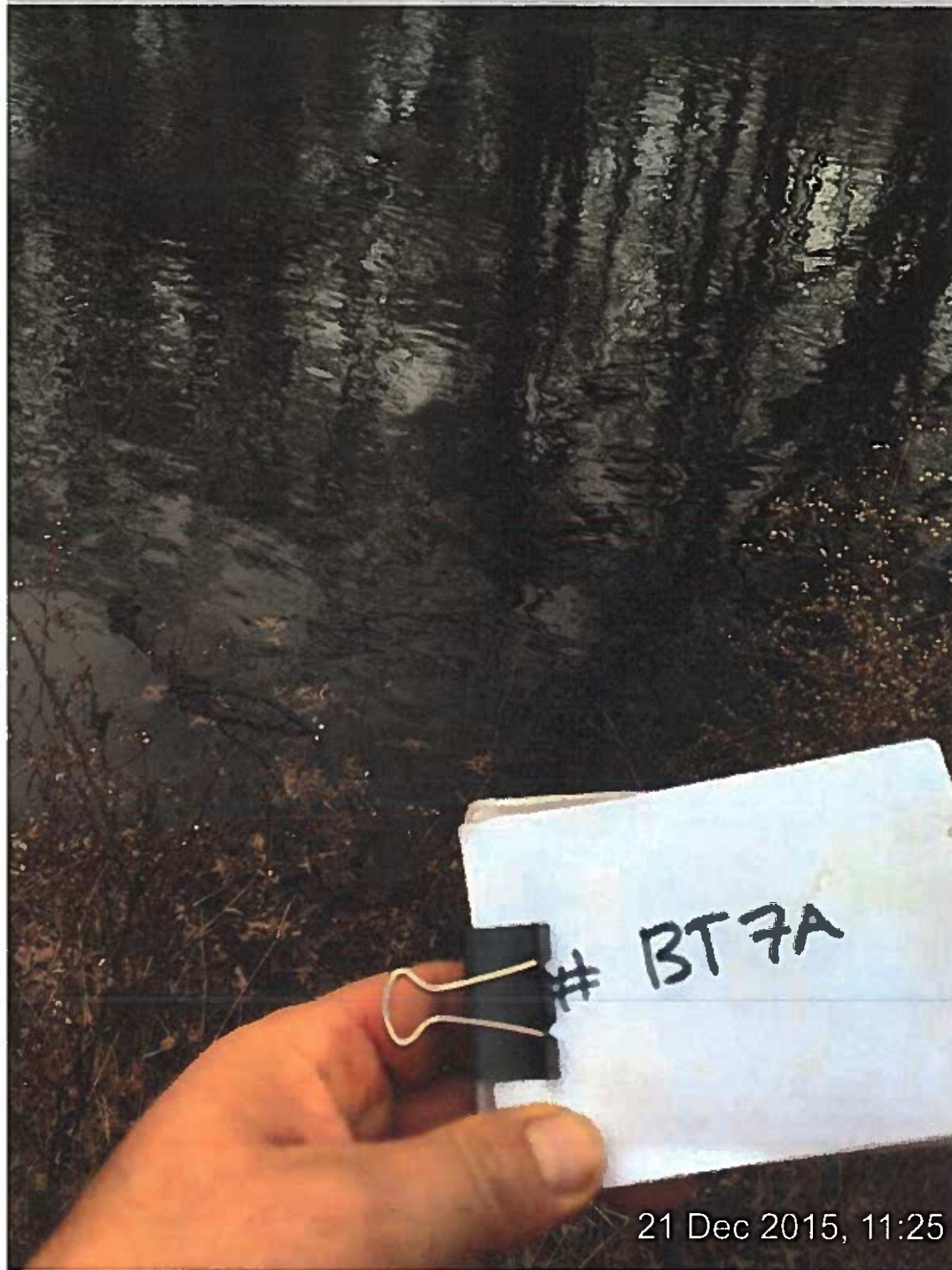
# BT 7A

21 Dec 2015, 10:41

AFTER



⊙ 227°SW (T)   ⊙ 40°39'27"N, 74°31'35"W ±16.4ft   ▲ 190ft



21 Dec 2015, 11:25

Location bt8a

Tree removed

<http://maps.google.com/?q=40.65928,-74.52724>

Latitude : 40.659277

Longitude : -74.527243

Altitude : 260 feet

Accuracy of GPS signal : 16 feet

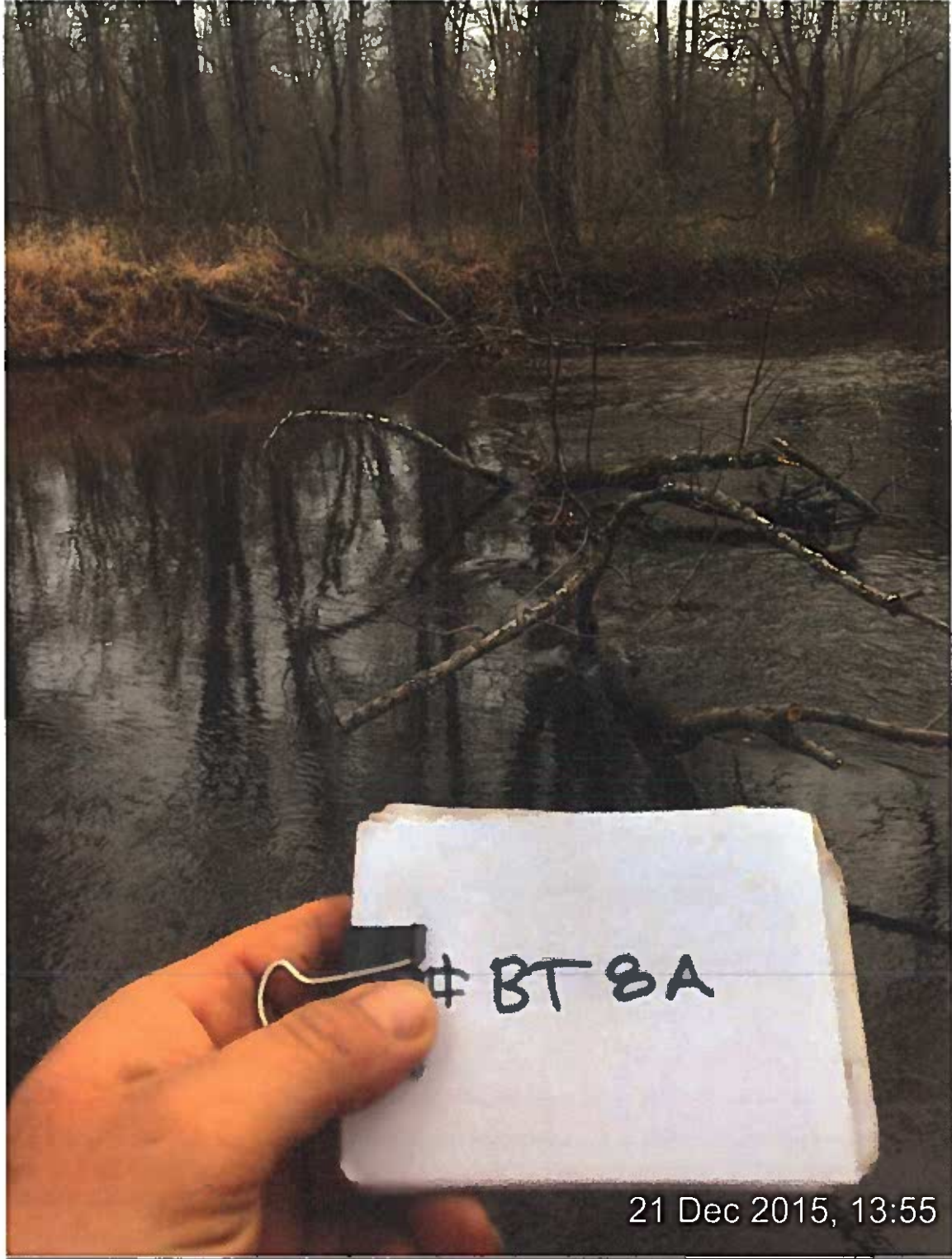
12/21/15, 1:55 PM

40.659277,-74.527243

**BEFORE**

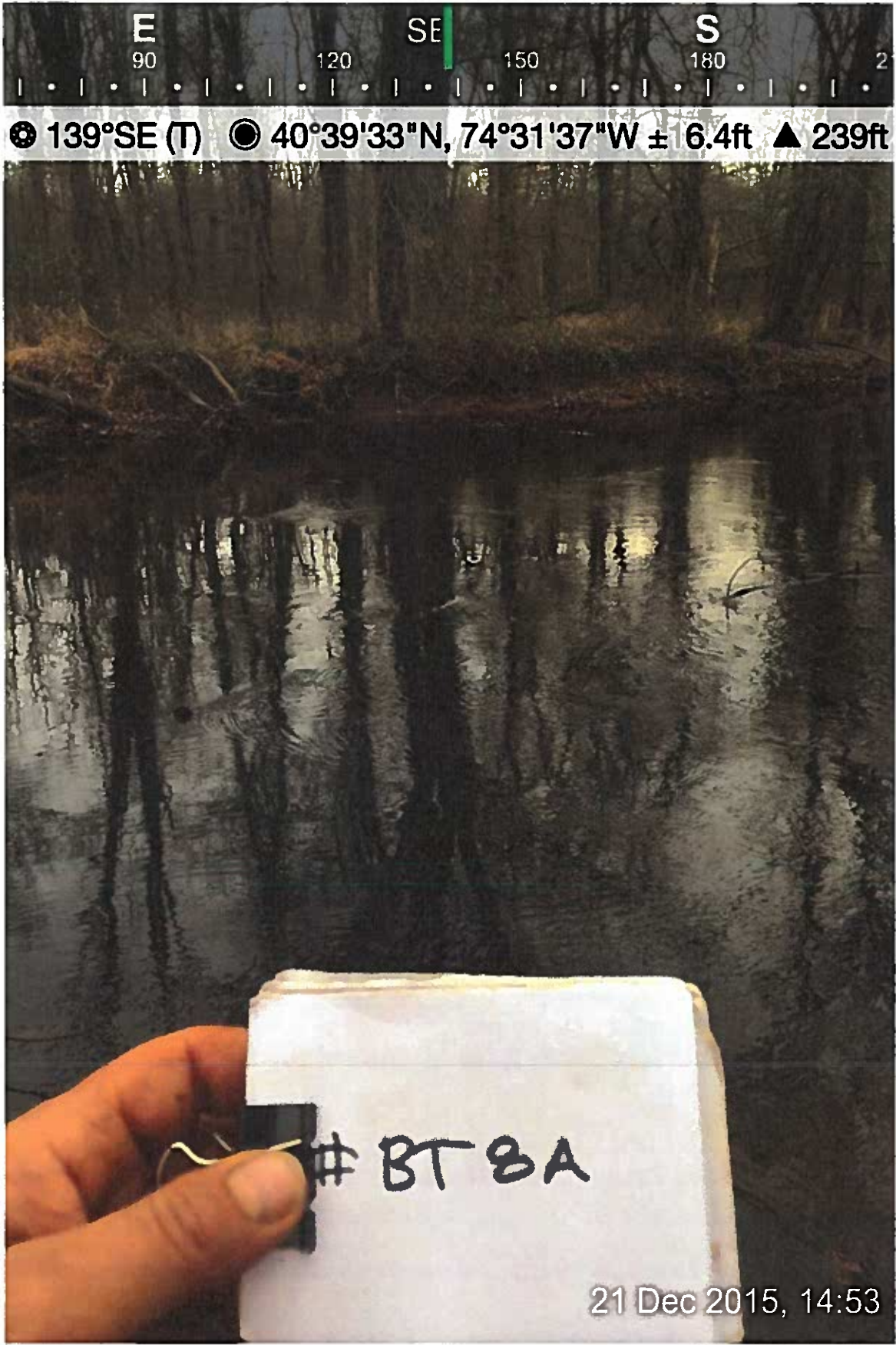


☉ 141°SE (T) ☉ 40°39'33"N, 74°31'38"W ±16.4ft ▲ 259ft



21 Dec 2015, 13:55

**AFTER**



Location 280

Tree removed

<http://maps.google.com/?q=40.66125,-74.52684>

Latitude : 40.661249

Longitude : -74.526837

Altitude : 168 feet

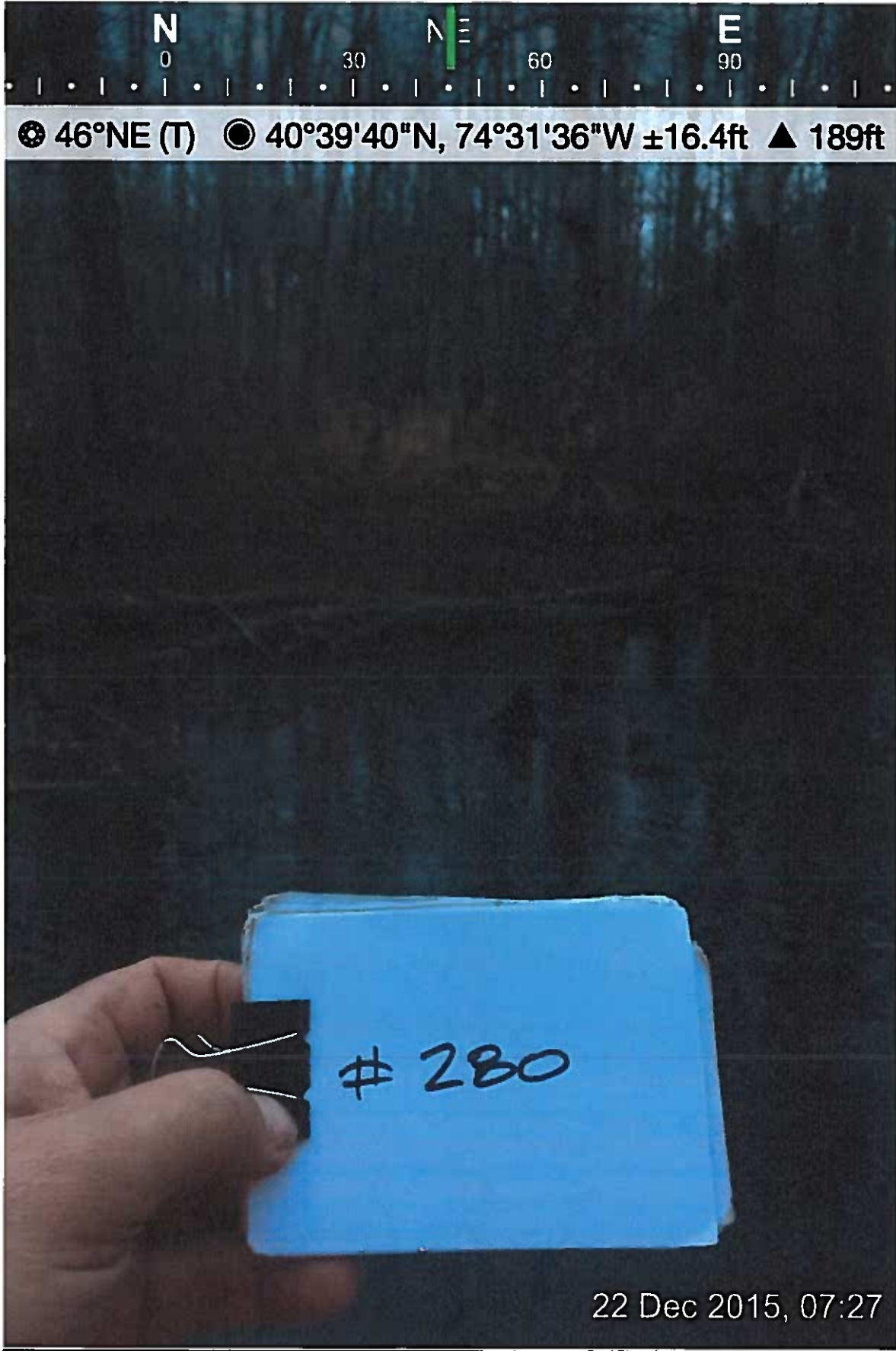
Accuracy of GPS signal : 16 feet

12/22/15, 7:26 AM

40.661249,-74.526837



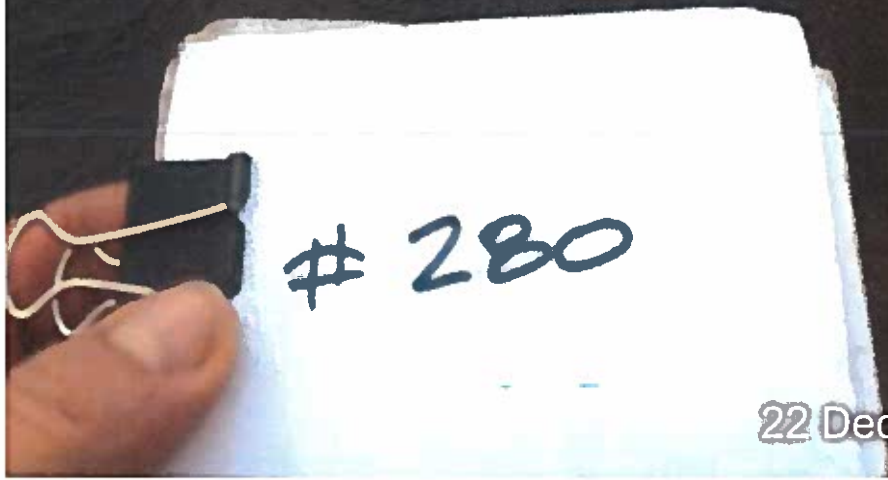
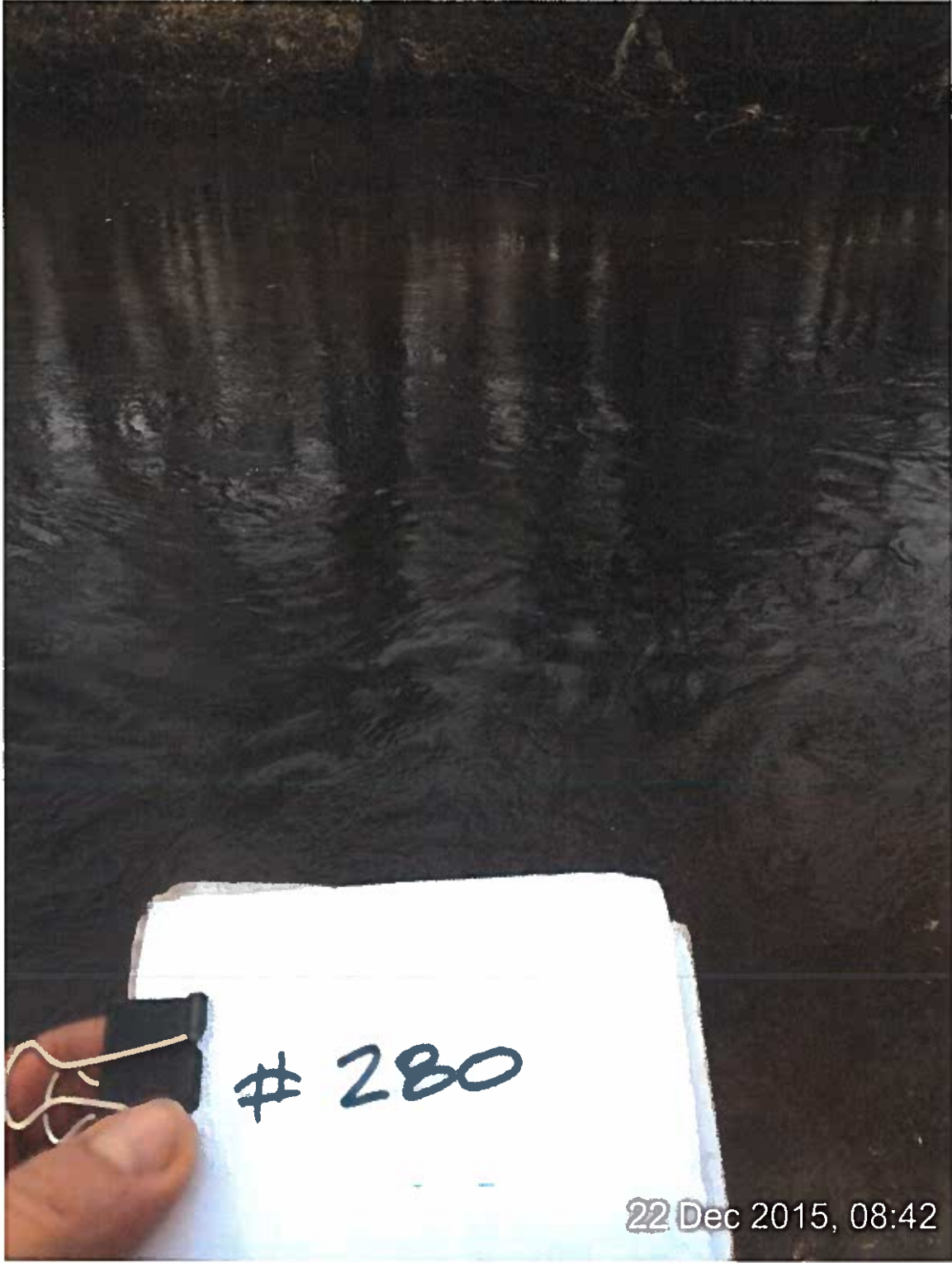
**BEFORE**



AFTER



⊙ 50°NE (T)   ⊙ 40°39'40"N, 74°31'36"W ±16.4ft   ▲ 217ft



22 Dec 2015, 08:42

Location lh13

Tree found & removed

<http://maps.google.com/?q=40.66629,-74.53376>

Latitude : 40.666290

Longitude : -74.533759

Altitude : 233 feet

Accuracy of GPS signal : 16 feet

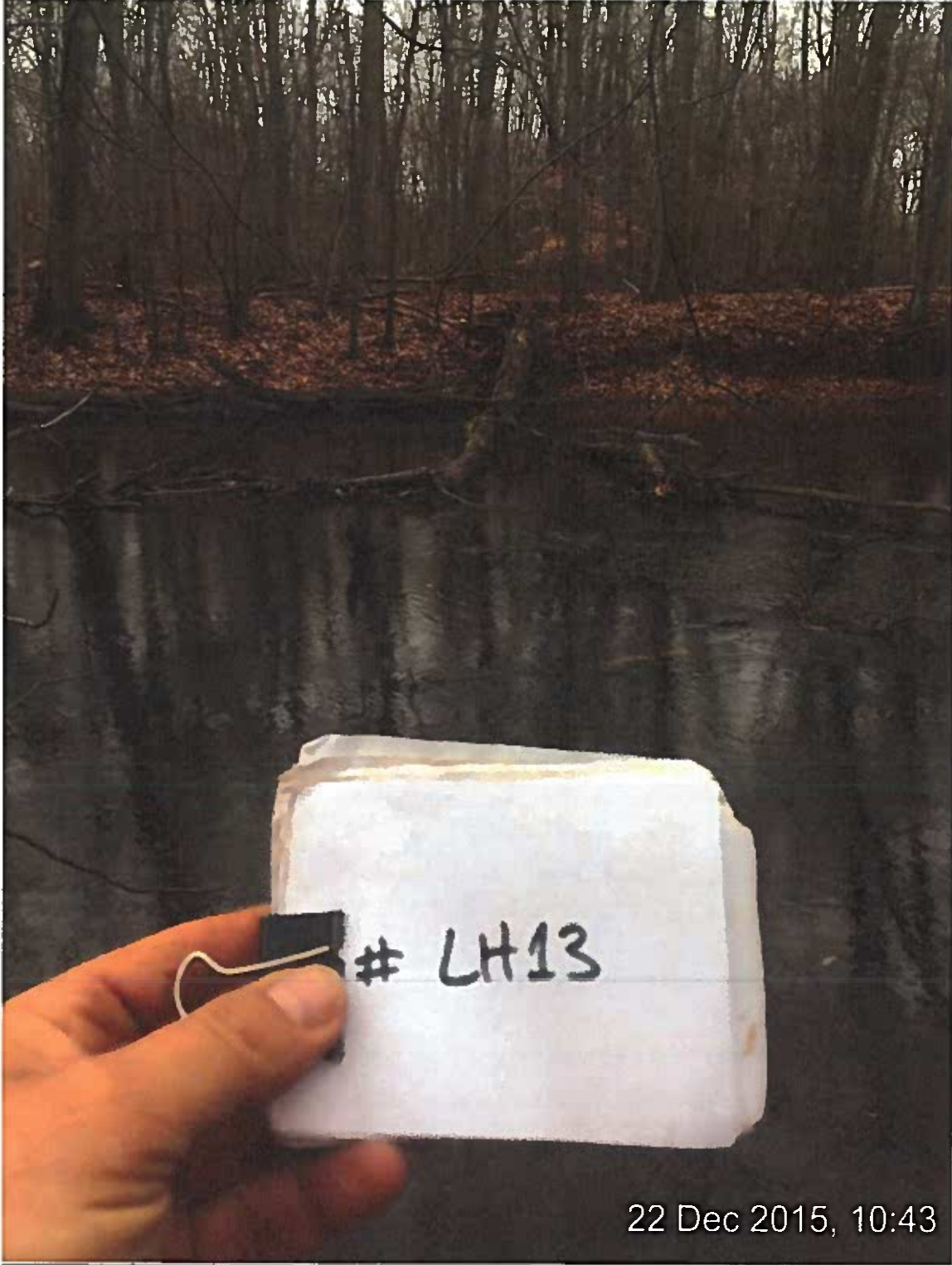
12/22/15, 10:43 AM

40.666290,-74.533759

**BEFORE**



⊙ 76°E (T)   ● 40°39'58"N, 74°32'1"W ±16.4ft   ▲ 234ft

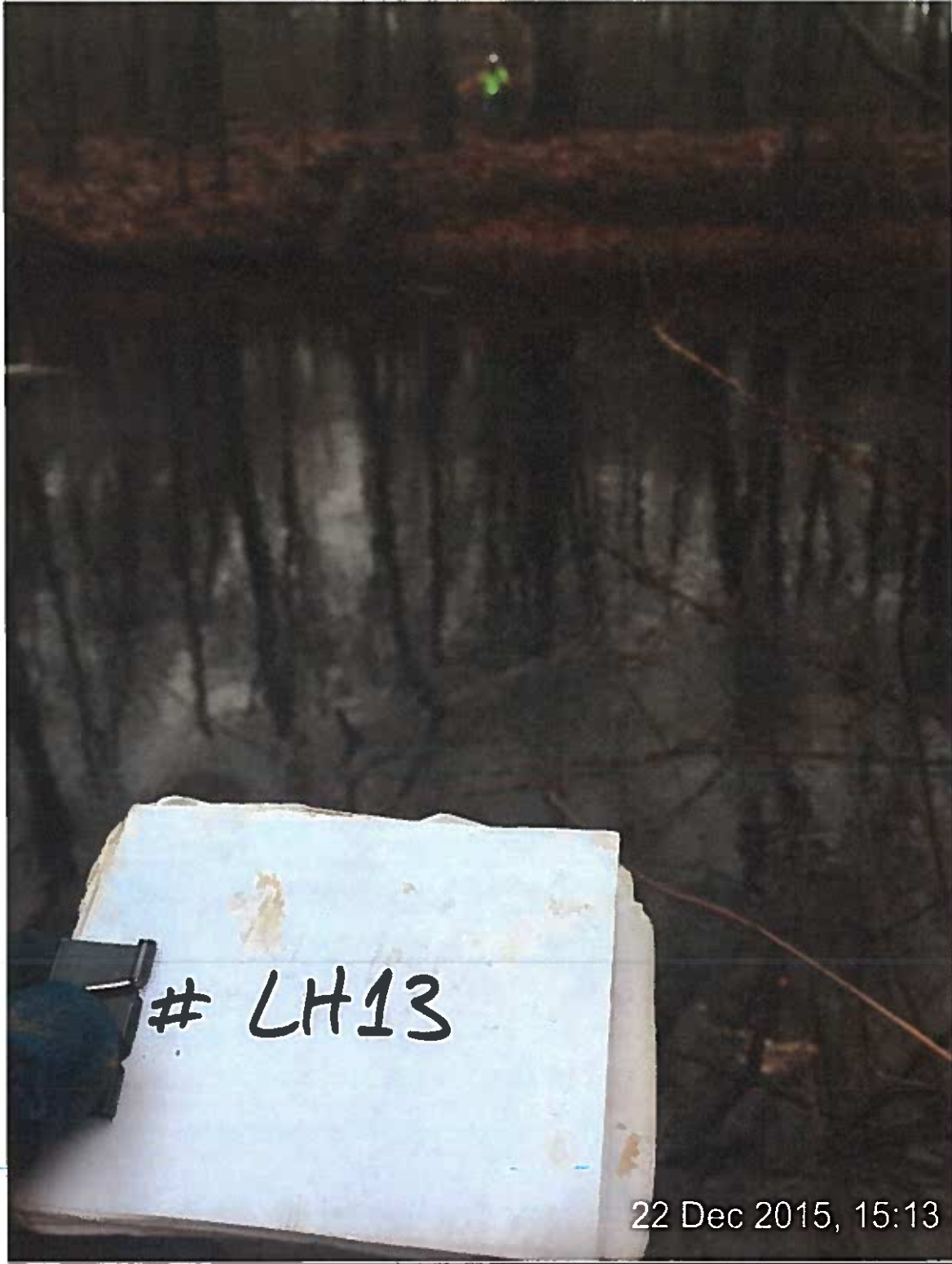


22 Dec 2015, 10:43

**AFTER**



☉ 81°E (T) ☉ 40°39'58"N, 74°32'1"W ±32.8ft ▲ 259ft



# LH13

22 Dec 2015, 15:13

Location 290

Tree removed

<http://maps.google.com/?q=40.66673,-74.53388>

Latitude : 40.666732

Longitude : -74.533879

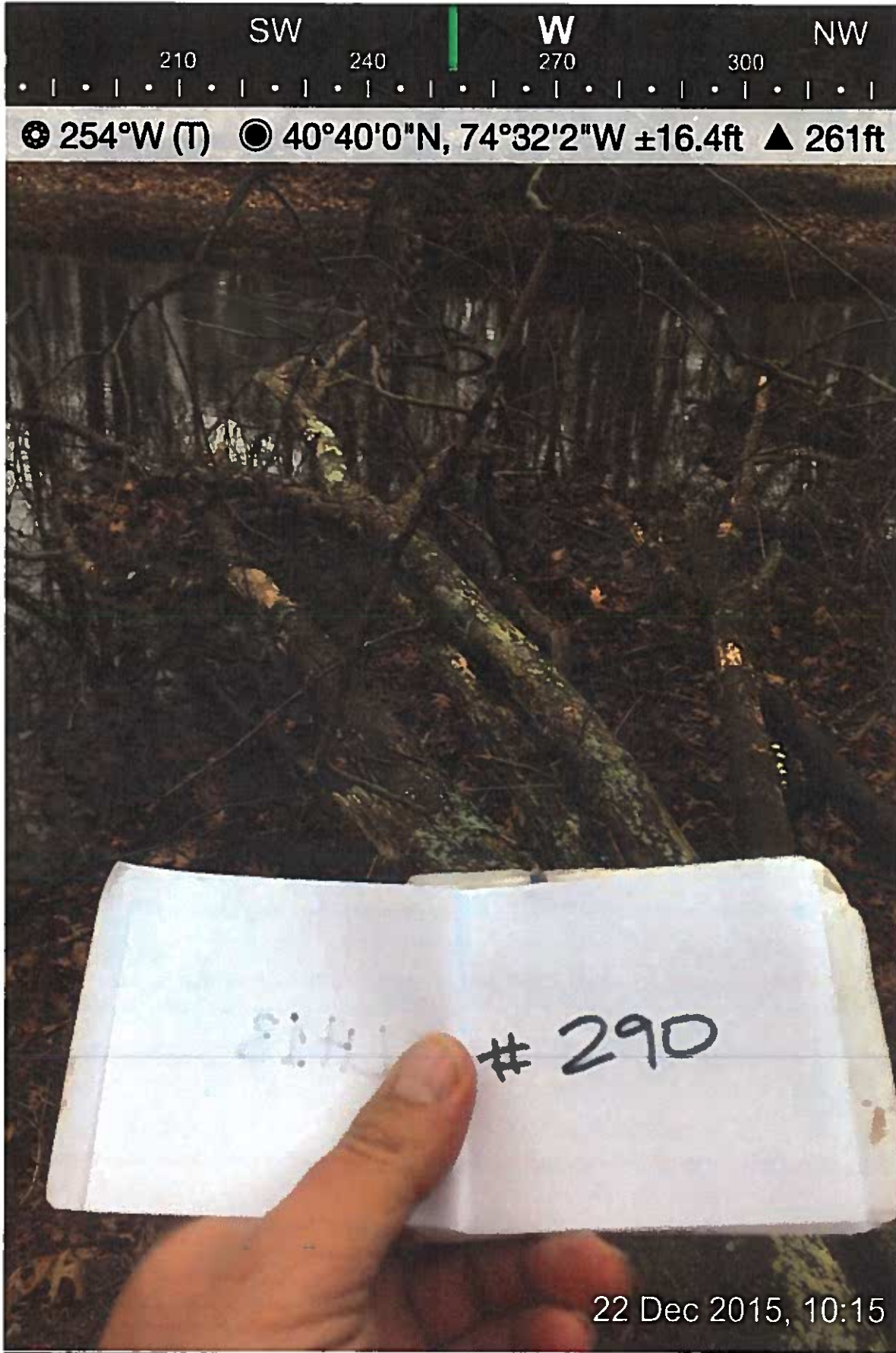
Altitude : 239 feet

Accuracy of GPS signal : 16 feet

12/22/15, 10:13 AM

40.666732,-74.533879

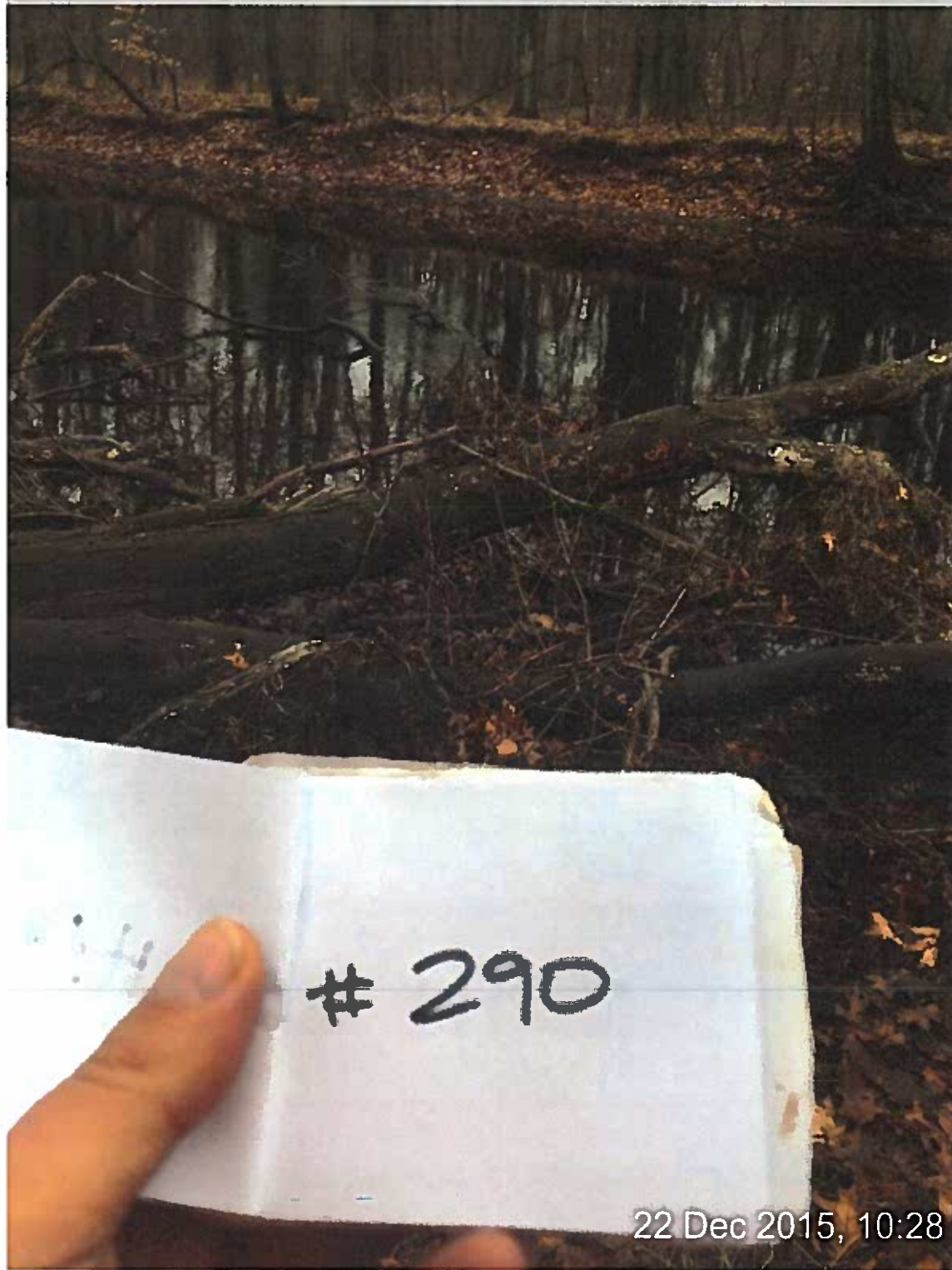
**BEFORE**



**BEFORE**



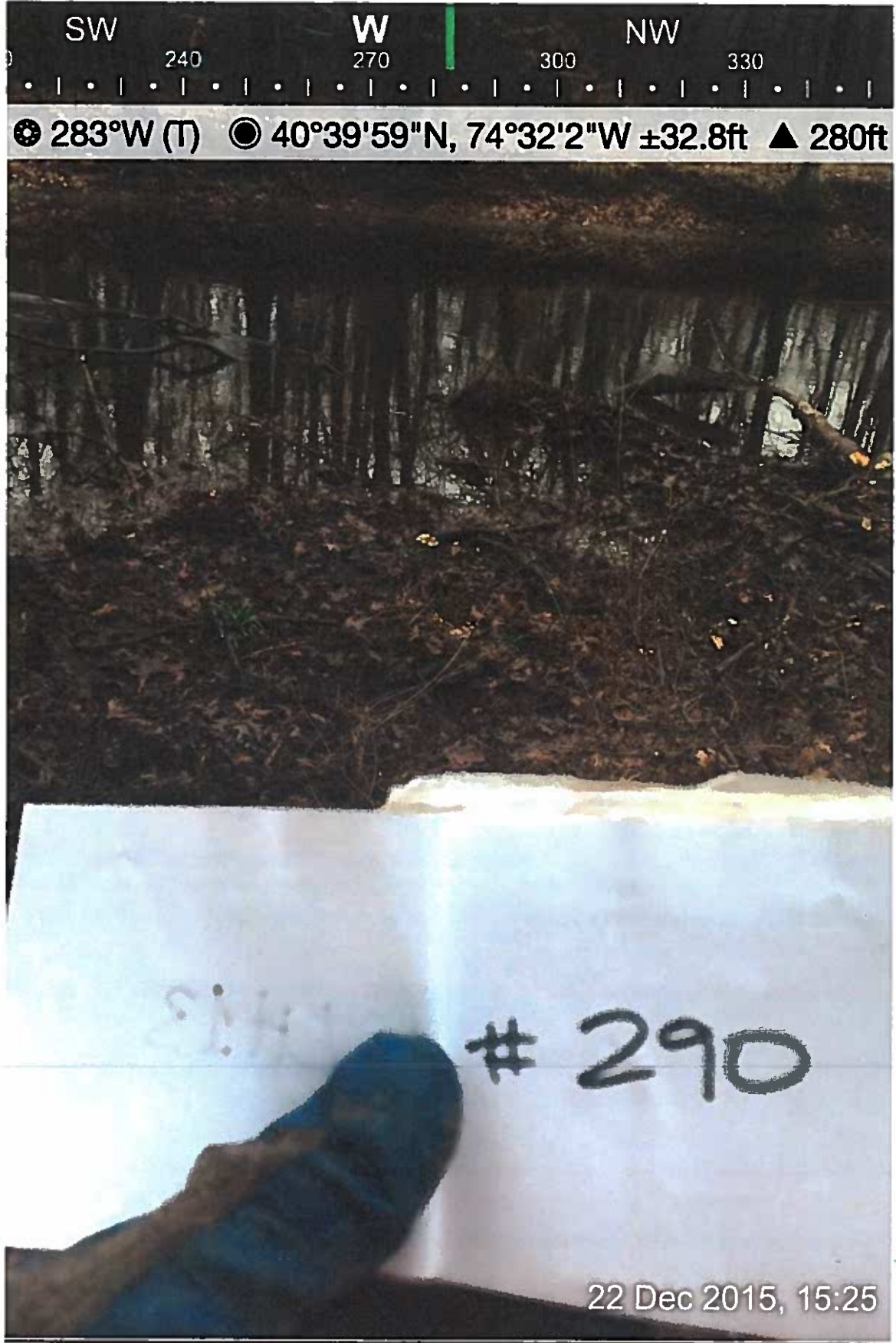
☉ 221°SW (T) ☉ 40°40'0"N, 74°32'2"W ±16.4ft ▲ 188ft



22 Dec 2015, 10:28



AFTER



Location lh12

Tree found & removed

<http://maps.google.com/?q=40.66782,-74.53256>

Latitude : 40.667820

Longitude : -74.532558

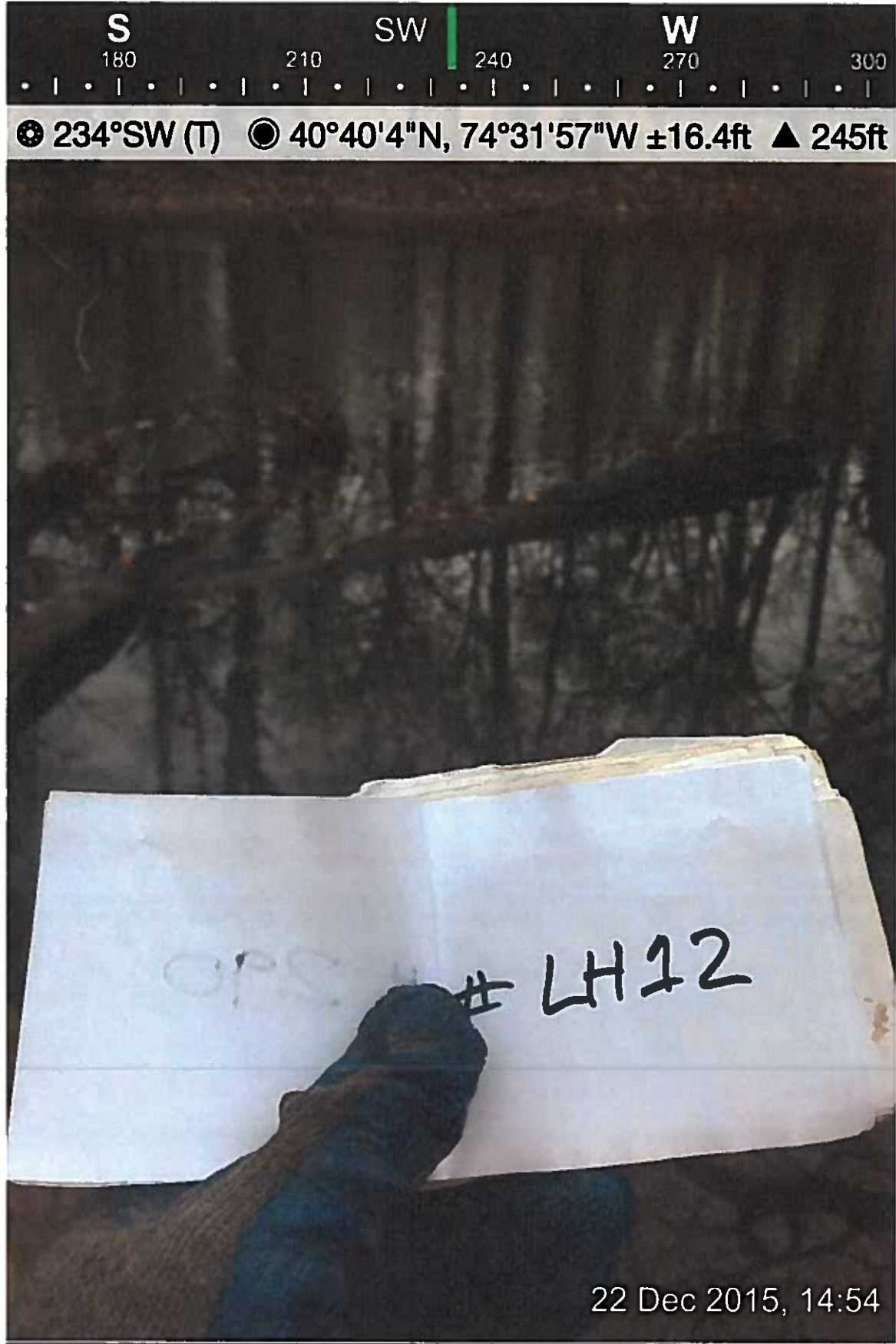
Altitude : 192 feet

Accuracy of GPS signal : 16 feet

12/22/15, 2:52 PM

40.667820,-74.532558

BEFORE



AFTER



SW

W

NW

240

270

300

330

284°W (T) 40°40'4"N, 74°31'58"W ±16.4ft ▲ 304ft

# LH12

22 Dec 2015, 15:56

Location 293

Tree removed / three trees had to b removed to get 293 out

<http://maps.google.com/?q=40.66701,-74.53194>

Latitude : 40.667015

Longitude : -74.531940

Altitude : 273 feet

Accuracy of GPS signal : 16 feet

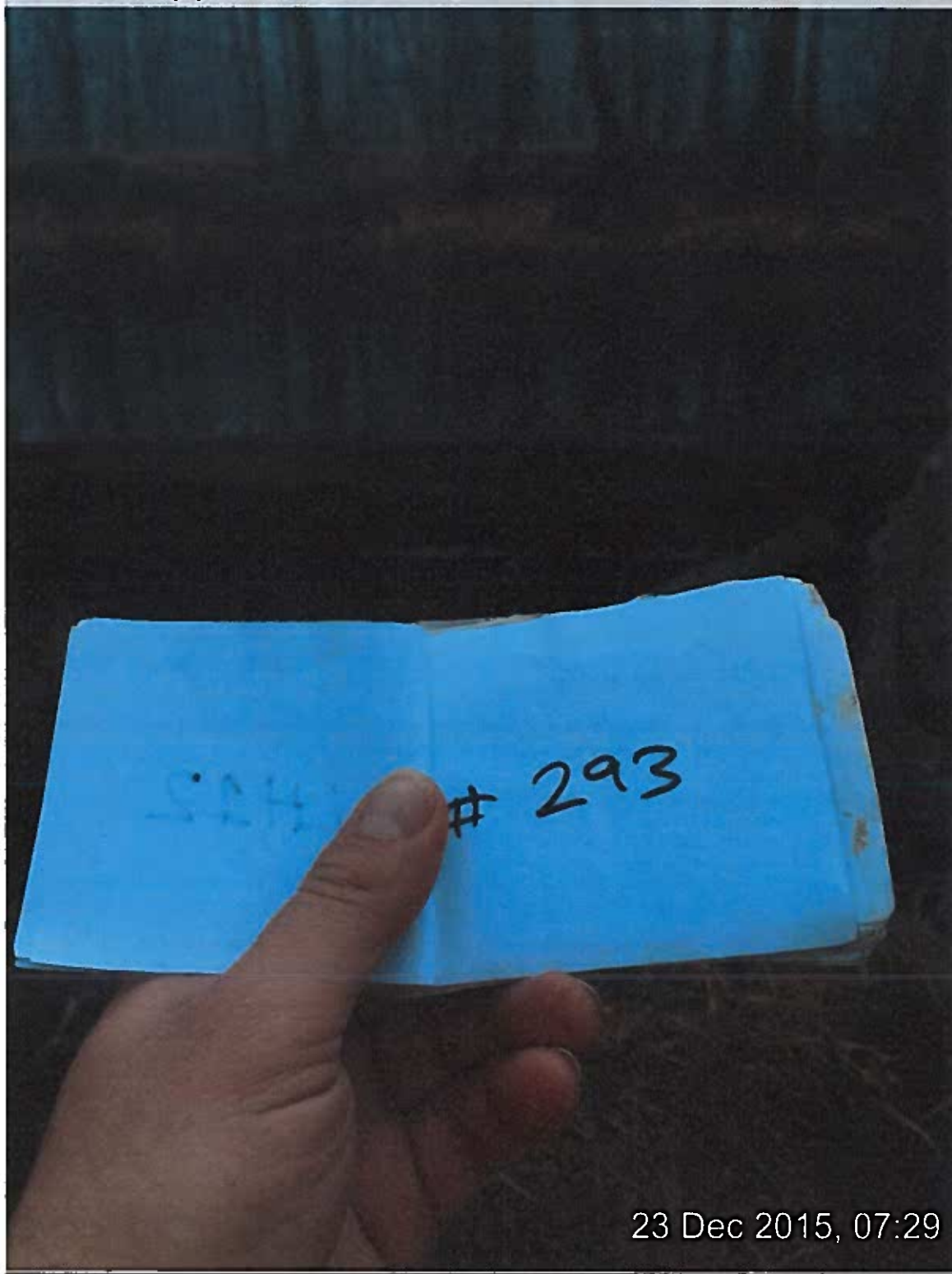
12/23/15, 7:28 AM

40.667015,-74.531940

**BEFORE**



⊙ 165°S (T)   ⊙ 40°40'1"N, 74°31'55"W ±16.4ft   ▲ 260ft



23 Dec 2015, 07:29

**BEFORE**



☉ 189°S (T)   ● 40°40'1"N, 74°31'55"W ±16.4ft   ▲ 264ft

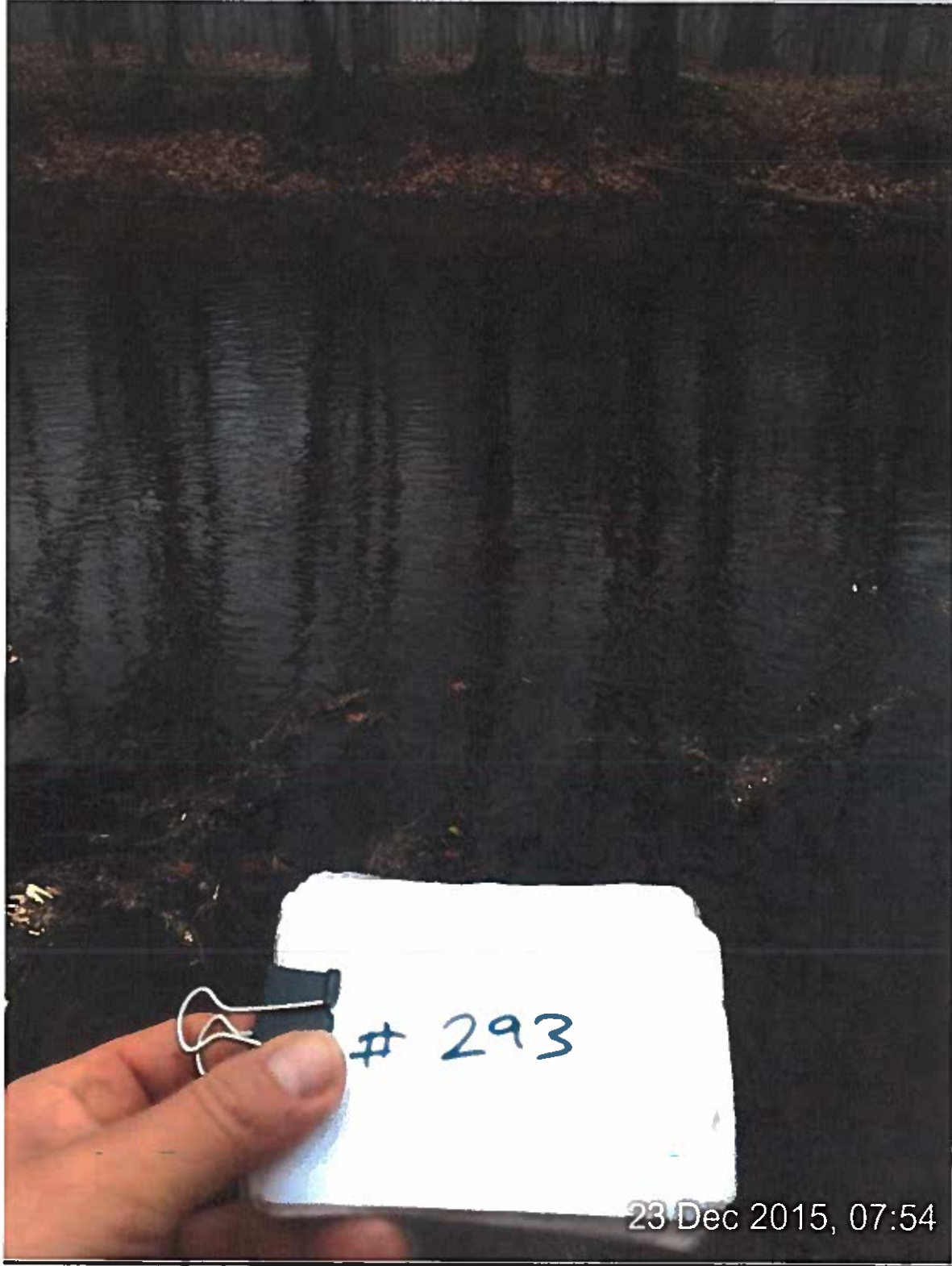


23 Dec 2015, 07:30

AFTER



☉ 193°S (T) ☉ 40°40'0"N, 74°31'54"W ±16.4ft ▲ 117ft



# 293

23 Dec 2015, 07:54



Location bt13a

Tree removed. One extra tree pulled

<http://maps.google.com/?q=40.67480,-74.52669>

Latitude : 40.674805

Longitude : -74.526686

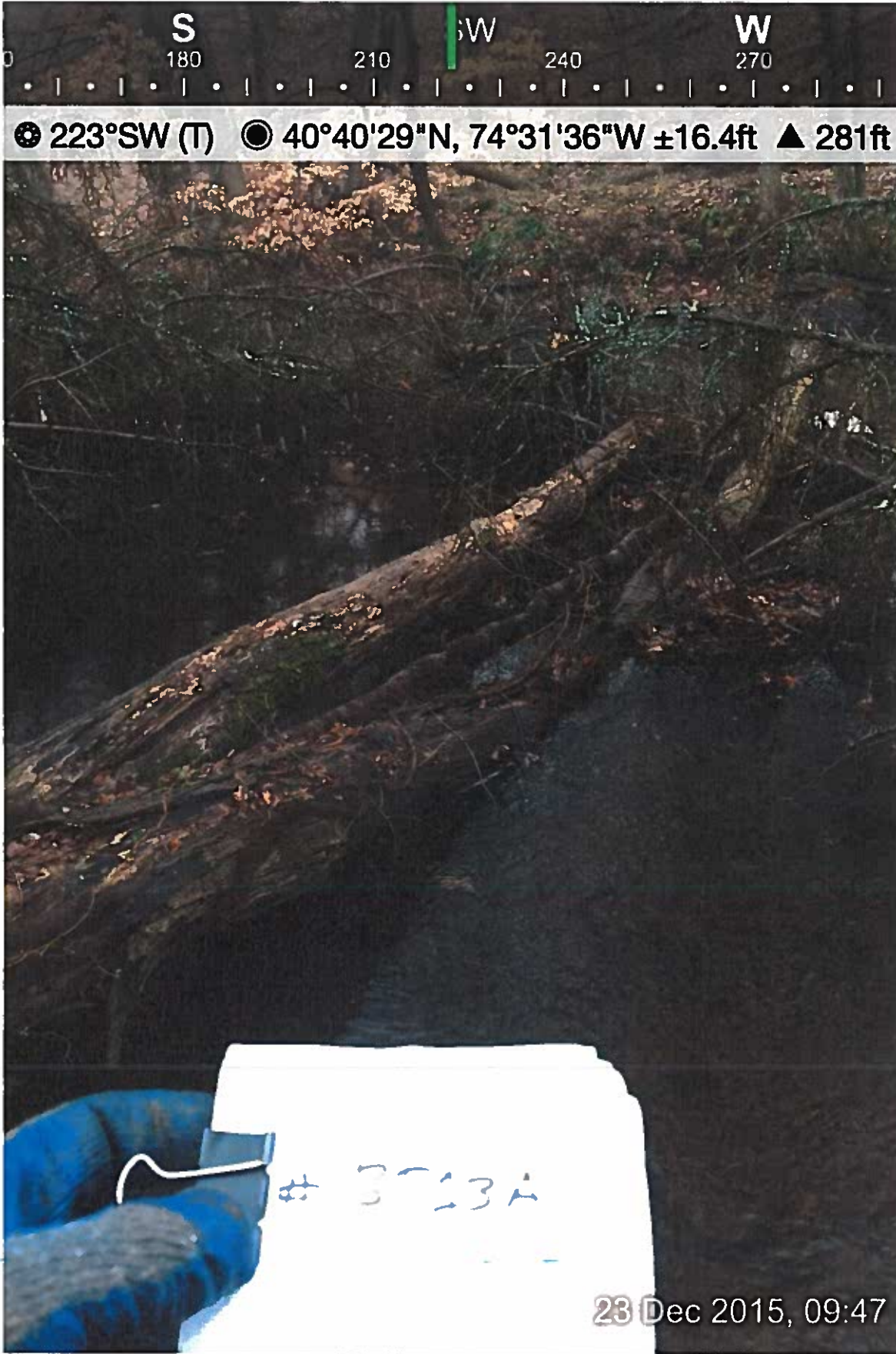
Altitude : 267 feet

Accuracy of GPS signal : 16 feet

12/23/15, 9:46 AM

40.674805,-74.526686

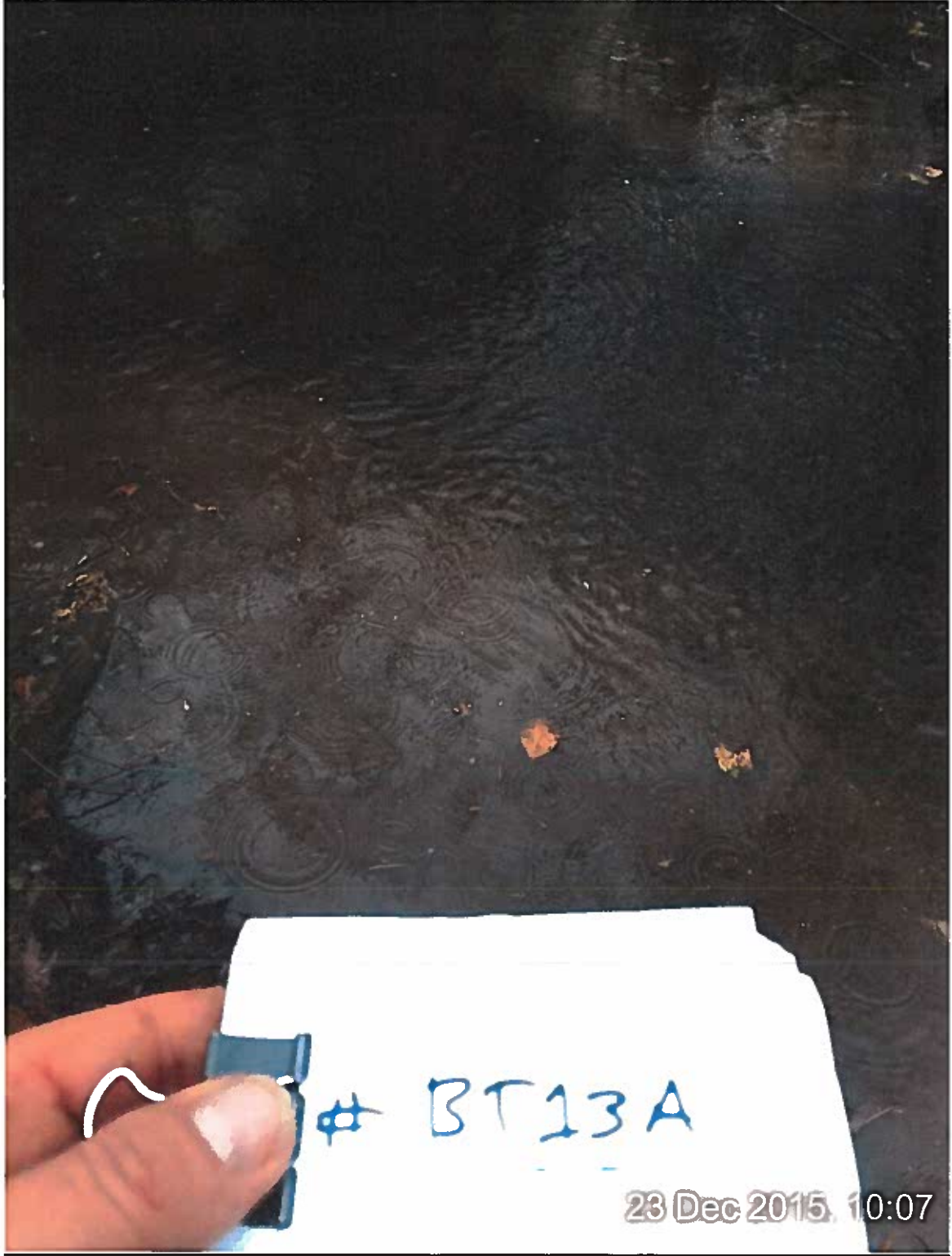
**BEFORE**



**AFTER**



⊙ 202°S (T)    ⊙ 40°40'28"N, 74°31'36"W ±32.8ft    ▲ 272ft



# BT13A

23 Dec 2015, 10:07

Location bt12a

Tree removed. Pulled one extra tree

<http://maps.google.com/?q=40.67490,-74.52690>

Latitude : 40.674901

Longitude : -74.526902

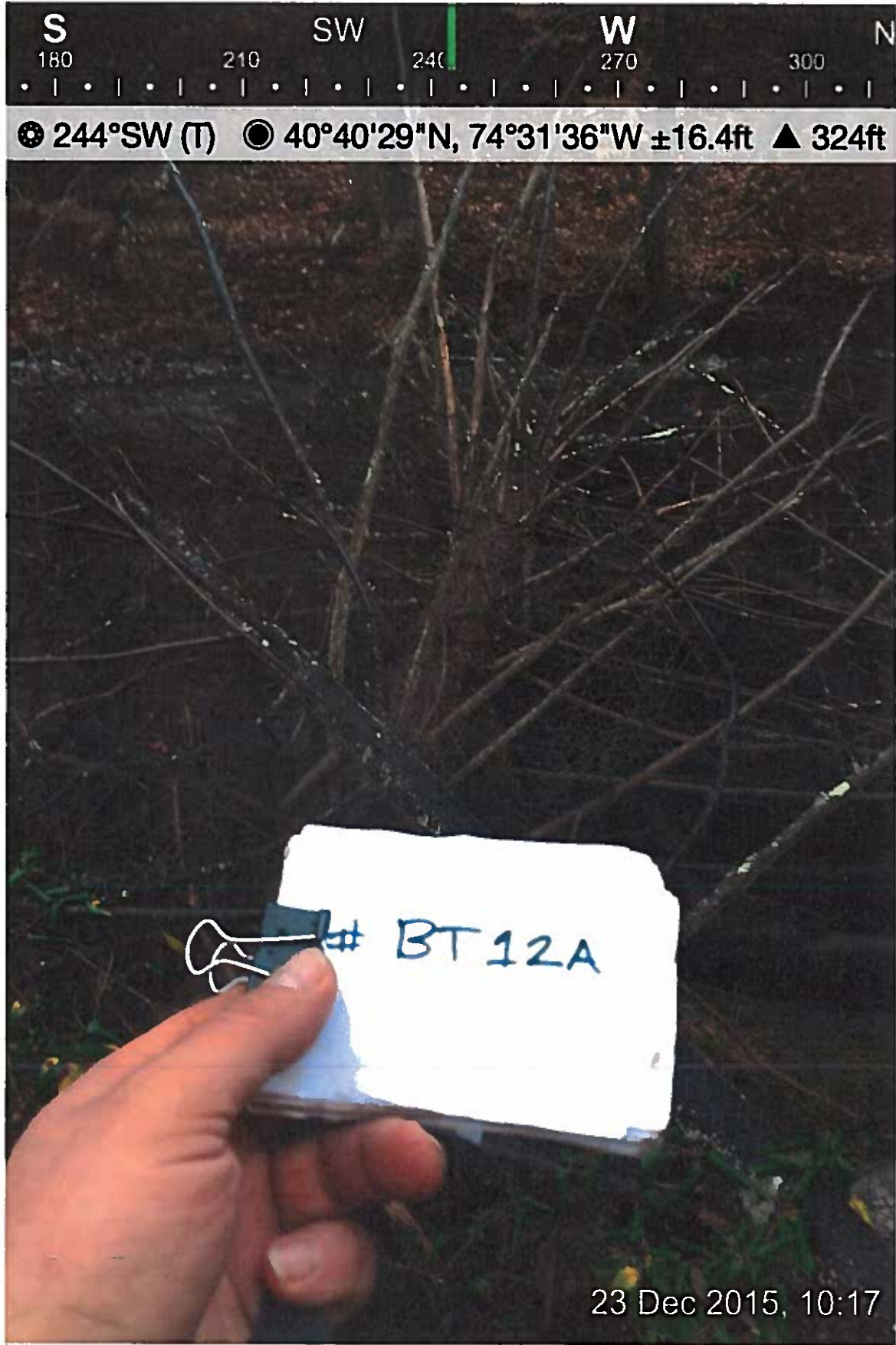
Altitude : 332 feet

Accuracy of GPS signal : 33 feet

12/23/15, 10:16 AM

40.674901,-74.526902

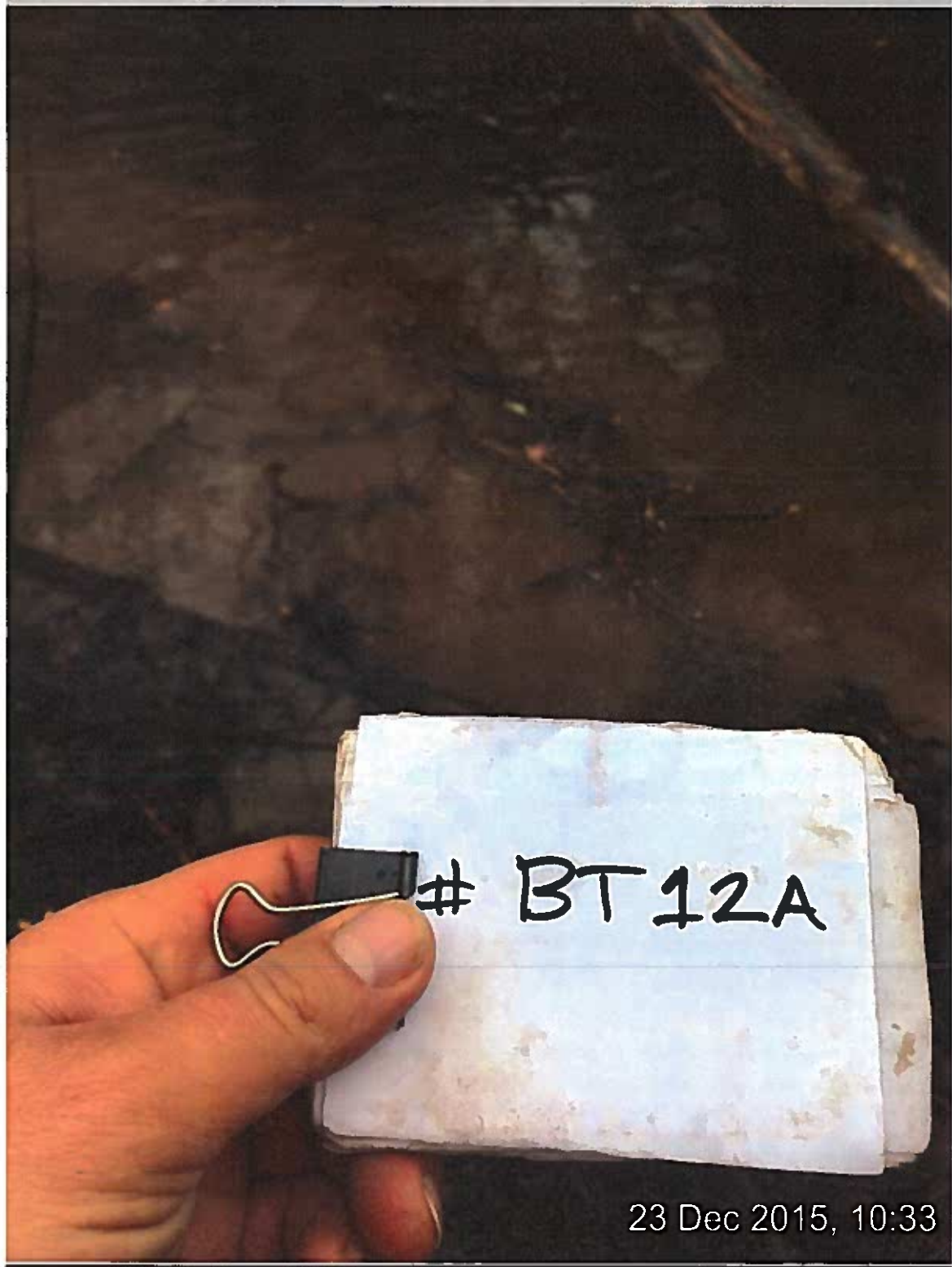
**BEFORE**



**AFTER**



⊙ 237°SW (T)   ⊙ 40°40'29"N, 74°31'37"W ±32.8ft   ▲ 266ft



23 Dec 2015, 10:33

Location bt10a

Tree removed. One additional tree was removed

<http://maps.google.com/?q=40.67556,-74.52710>

Latitude : 40.675565

Longitude : -74.527102

Altitude : 233 feet

Accuracy of GPS signal : 16 feet

12/23/15, 11:32 AM

40.675565,-74.527102

Location bt11a

Tree removed

<http://maps.google.com/?q=40.67519,-74.52698>

Latitude : 40.675190

Longitude : -74.526983

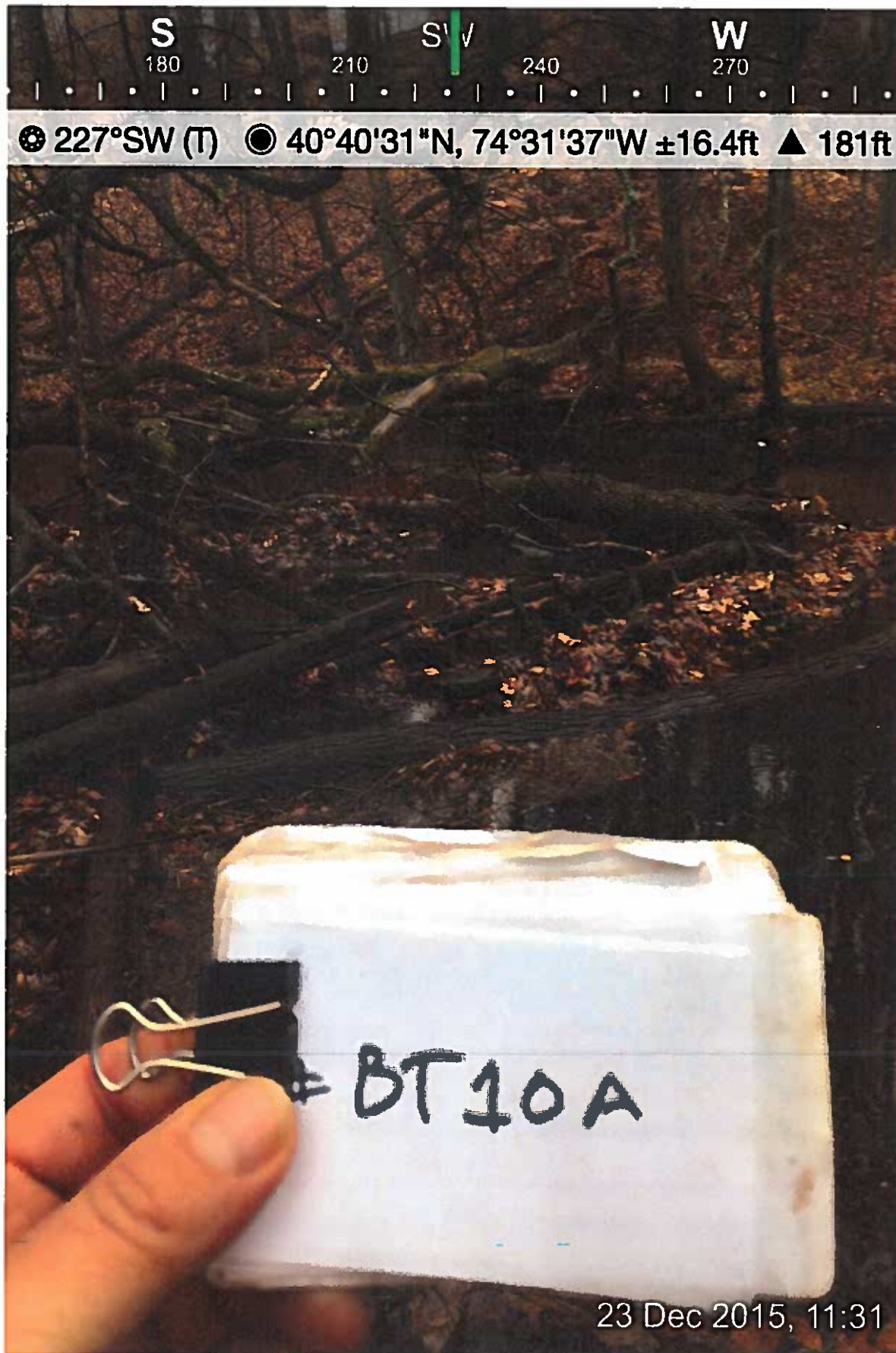
Altitude : 188 feet

Accuracy of GPS signal : 16 feet

12/23/15, 10:37 AM

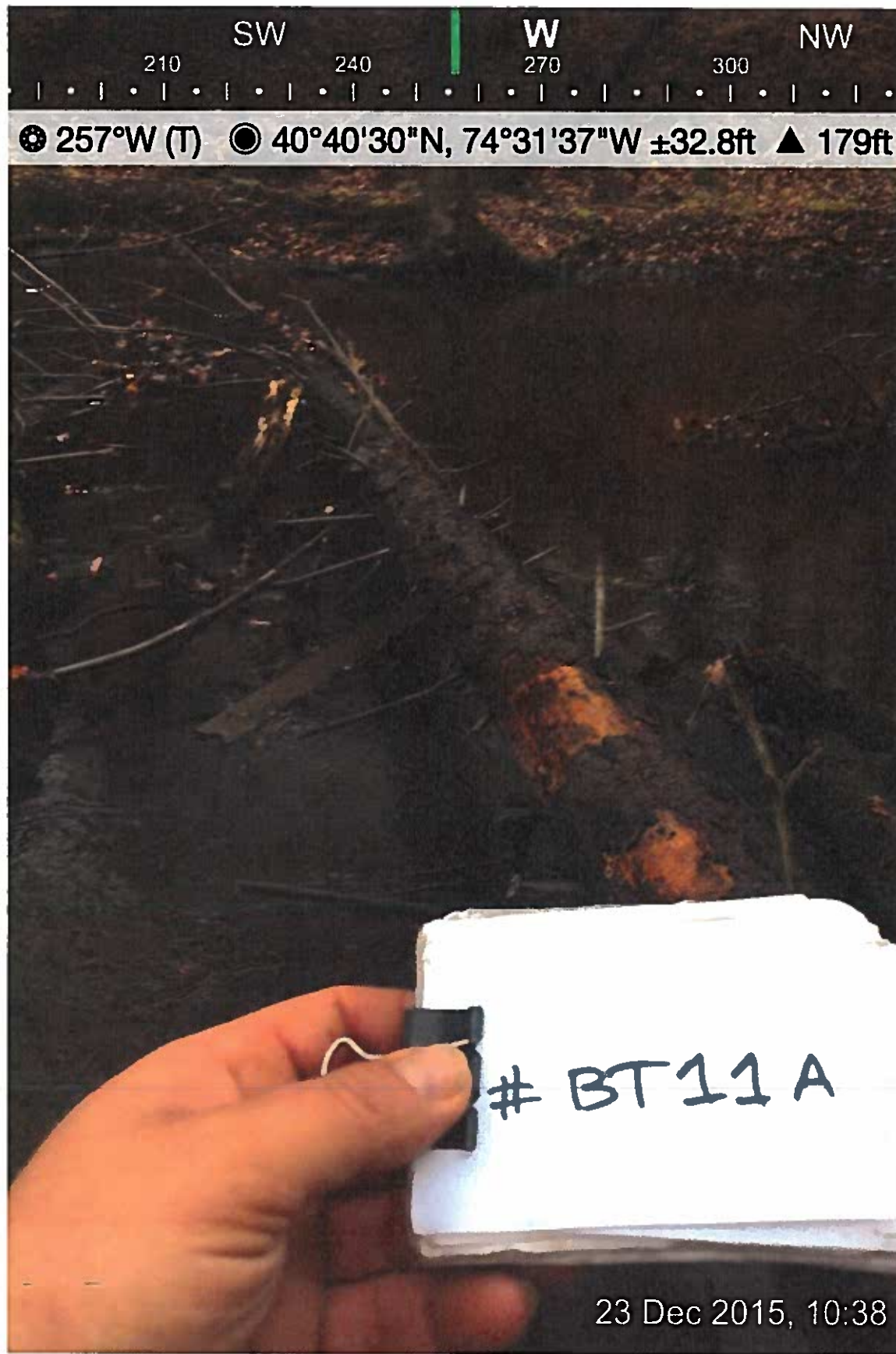
40.675190,-74.526983

BEFORE

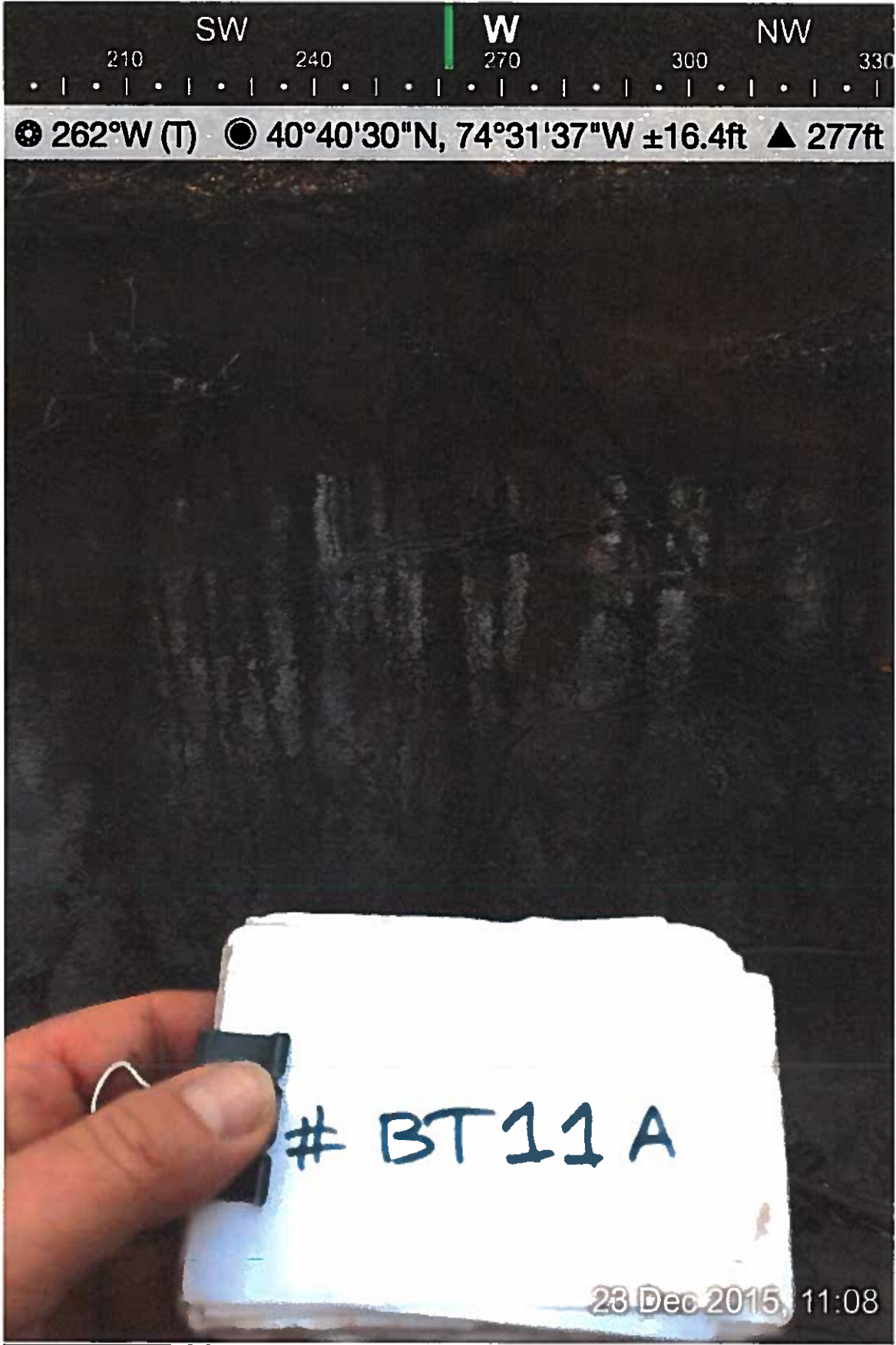




BEFORE



**AFTER**



Location bt9a

Tree removed

<http://maps.google.com/?q=40.67668,-74.52778>

Latitude : 40.676680

Longitude : -74.527780

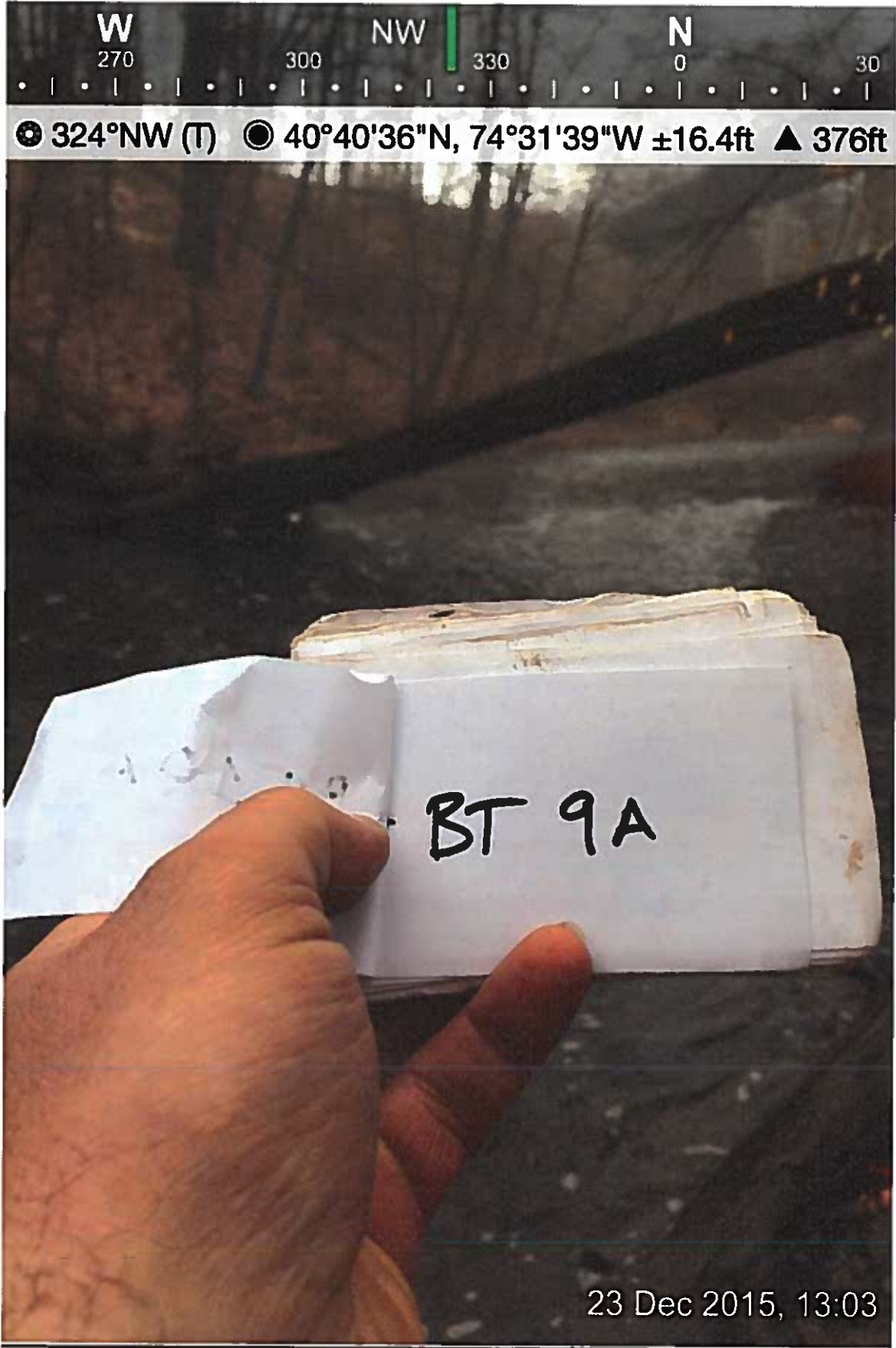
Altitude : 364 feet

Accuracy of GPS signal : 33 feet

12/23/15, 1:02 PM

40.676680,-74.527780

**BEFORE**



**AFTER**

