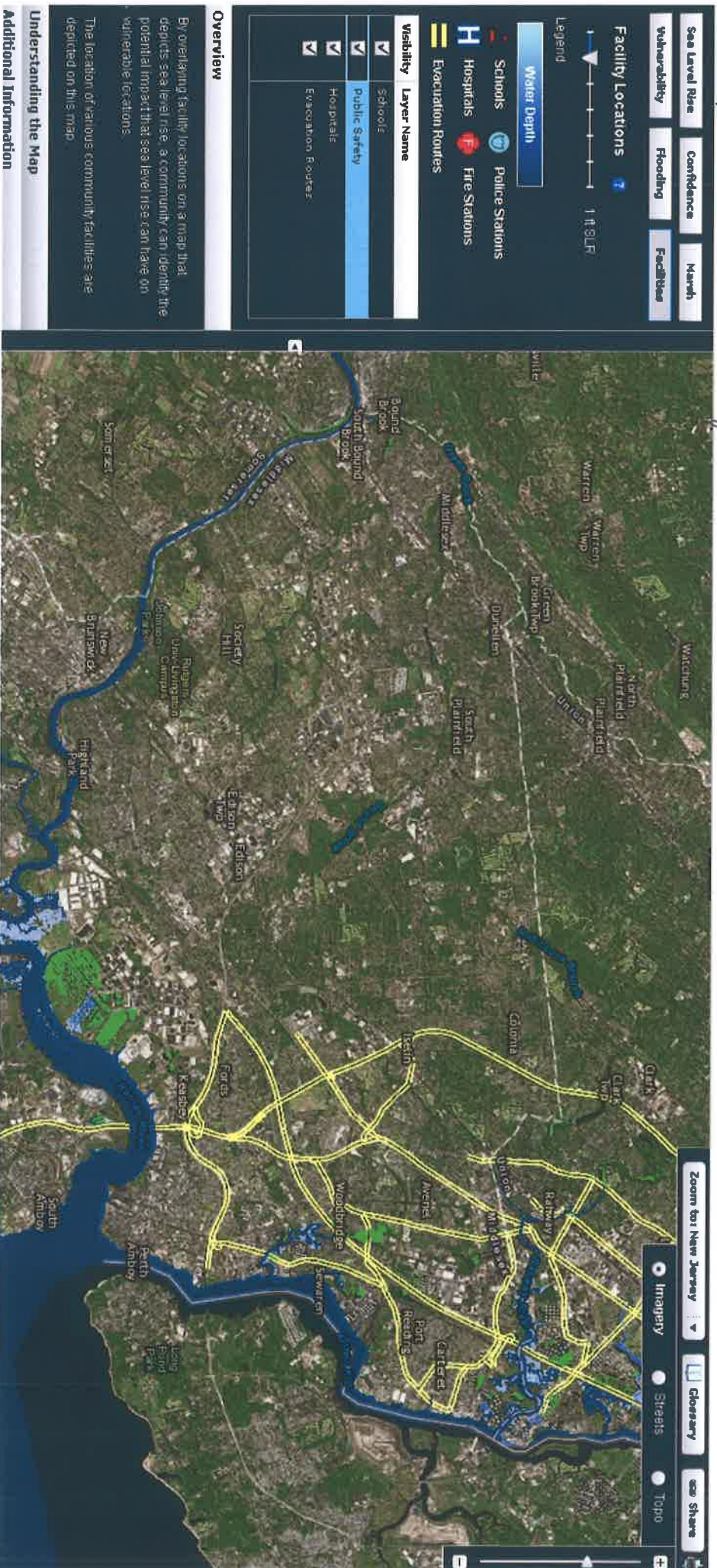


Map Titled: Woodbridge Twp. Coastal Evacuation Routes - 1ft. SLR



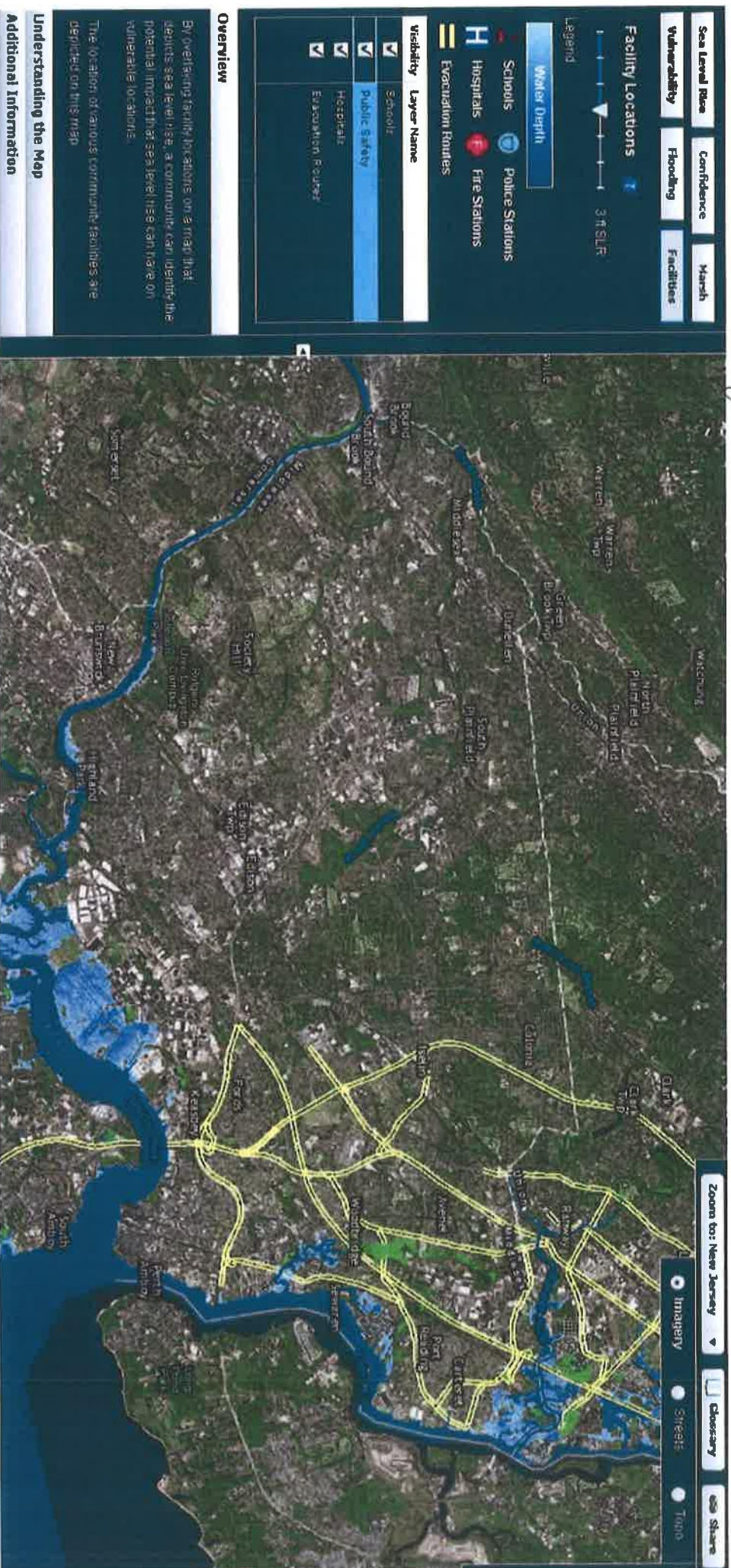


# Map titled: Woodbridge Twp Coastal Evacuation Routes SLR - 2ft. SLR



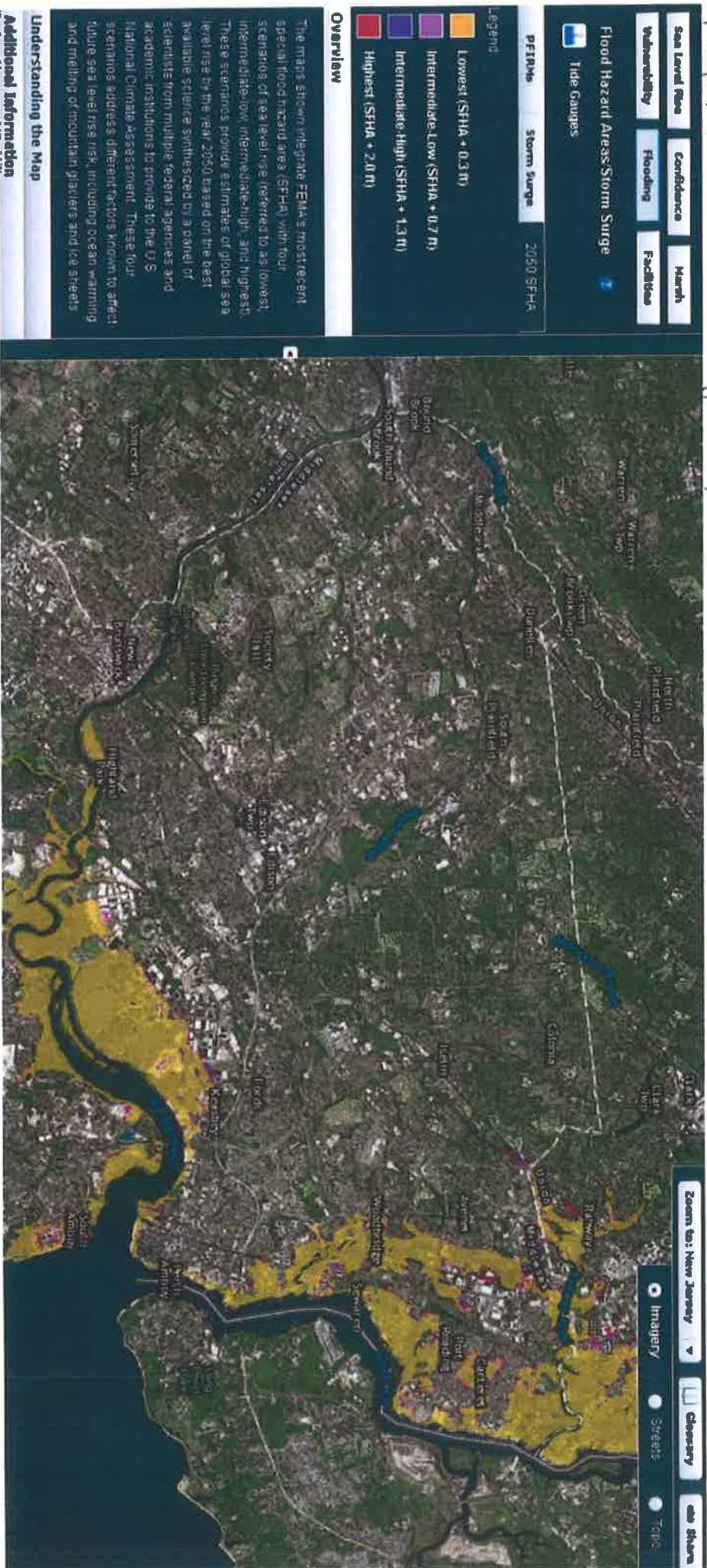


Map titled: Woodbridge Twp Coastal Evacuation Routes SLR - 3ft SLR





# Map titled: Woodbridge Twp SFHA



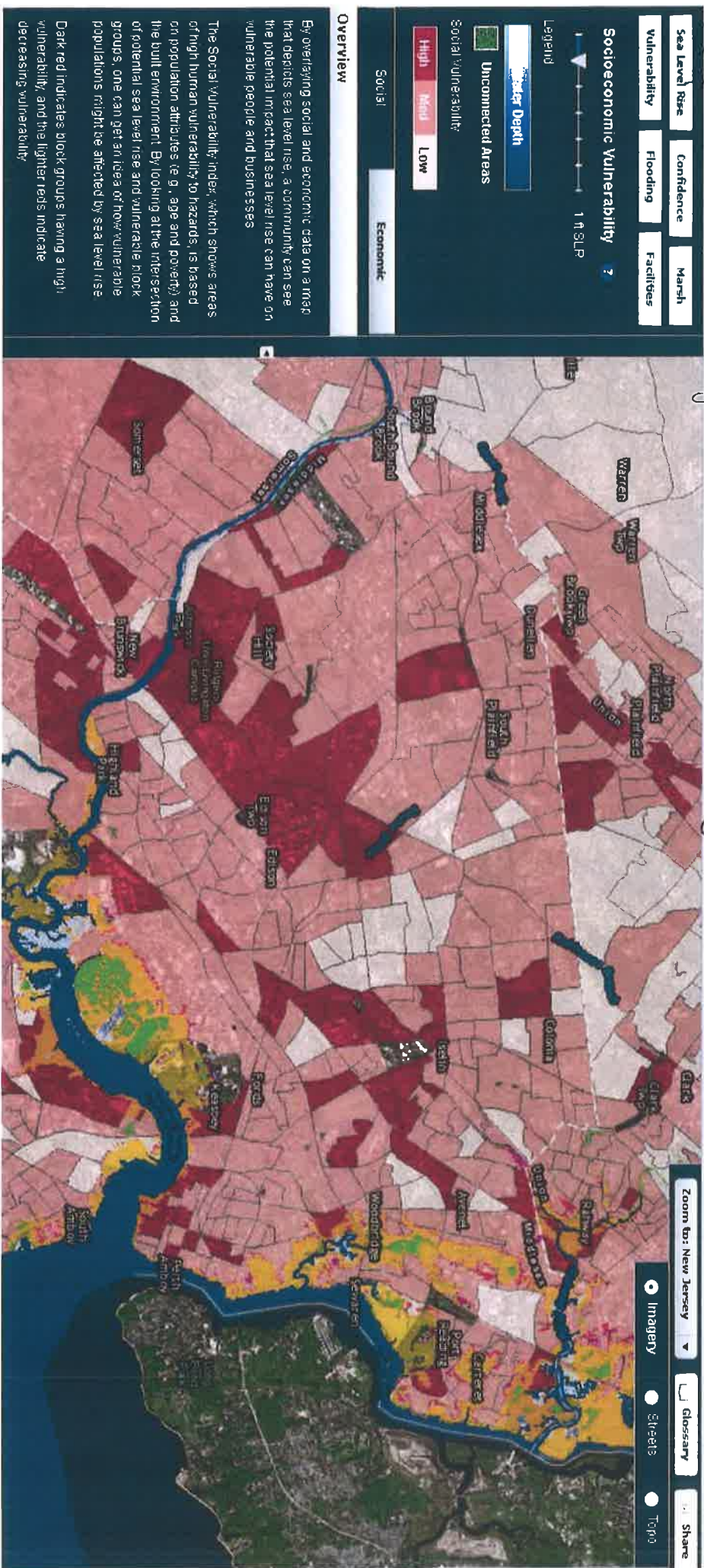


# Map titled: Woodbridge Twp Social Vulnerability SR - Current MHHW



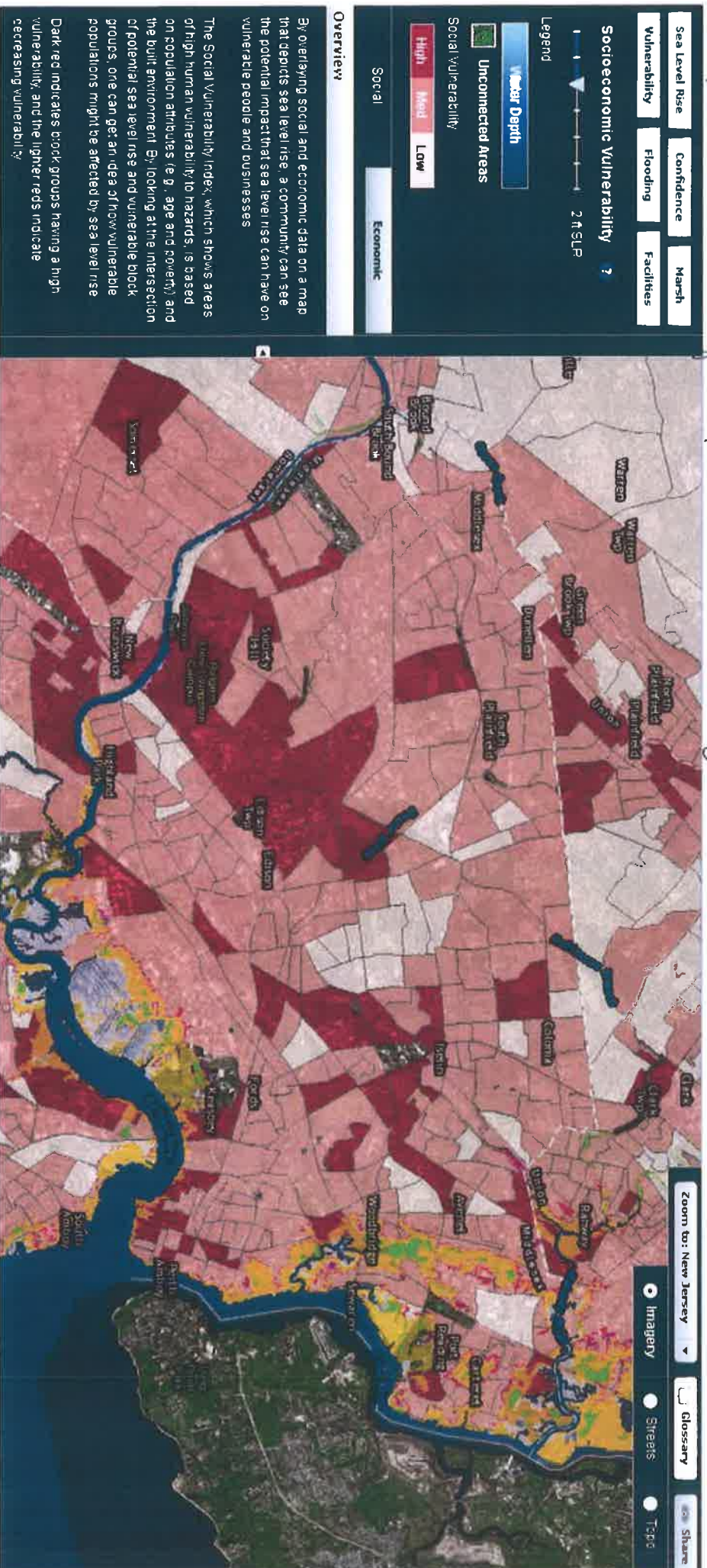


# Map titled: Woodbridge Twp Social Vulnerability SLR - 1ft. SLR



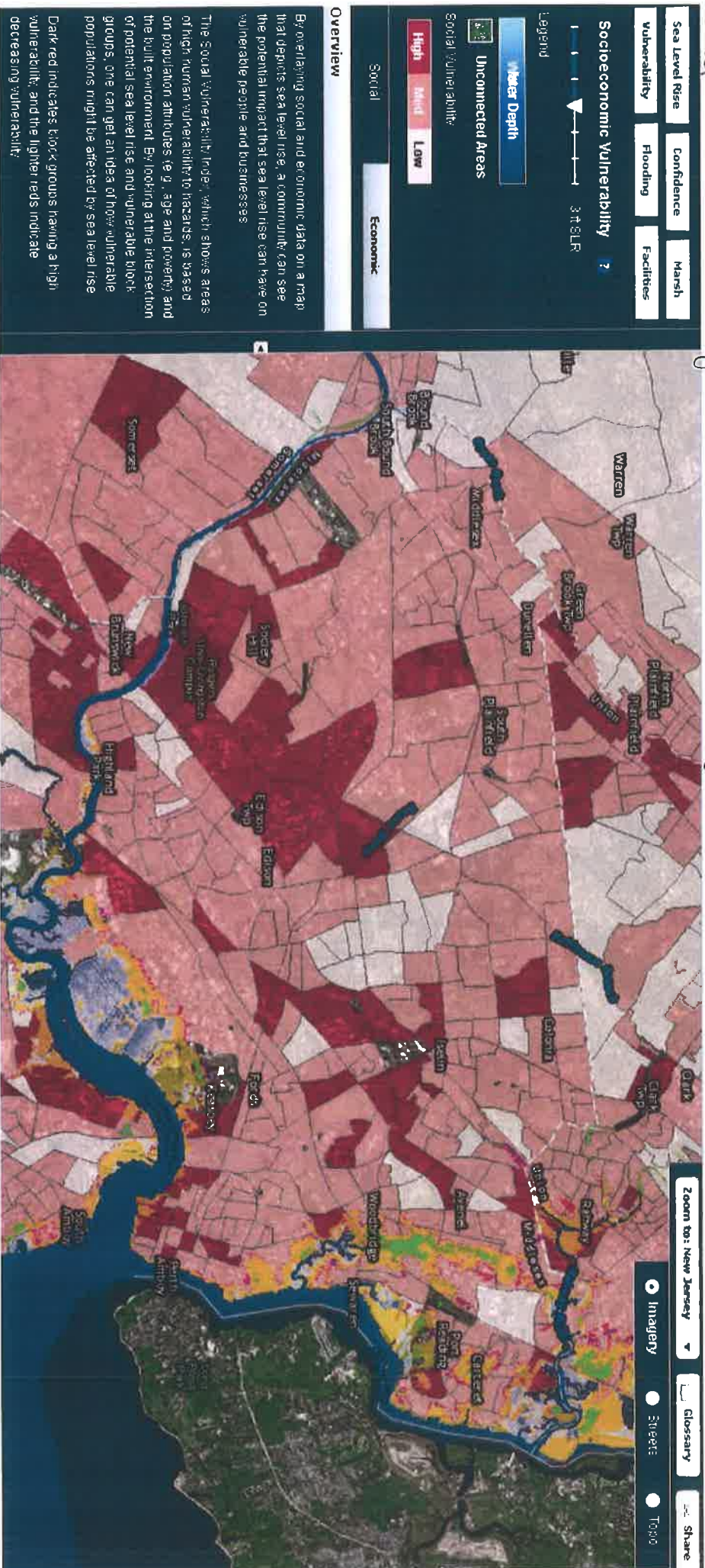


# Map titled: Woodbridge Twp Social Vulnerability SLR - 2ft. SLR



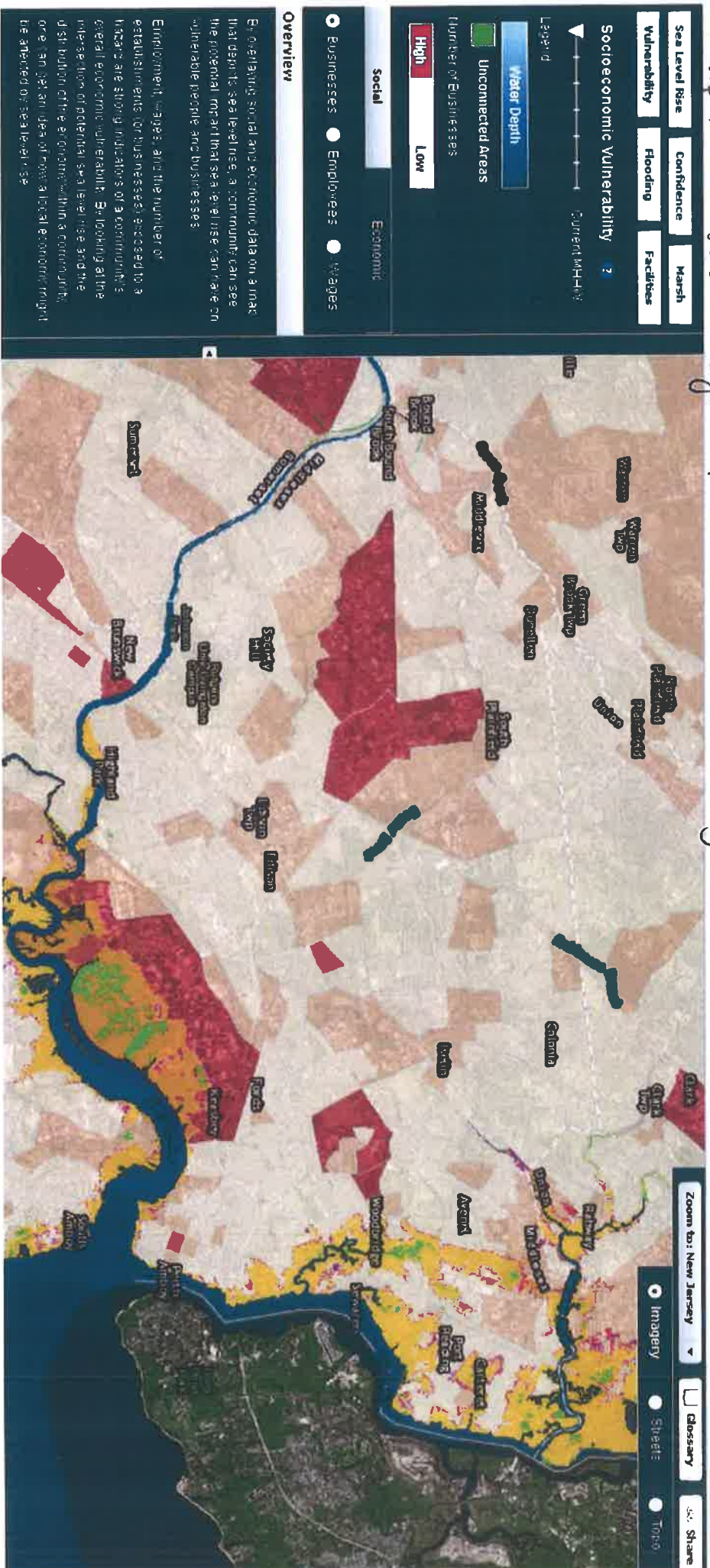


# Map titled: Woodbridge Twp Social Vulnerability SR - 3ft. SLR



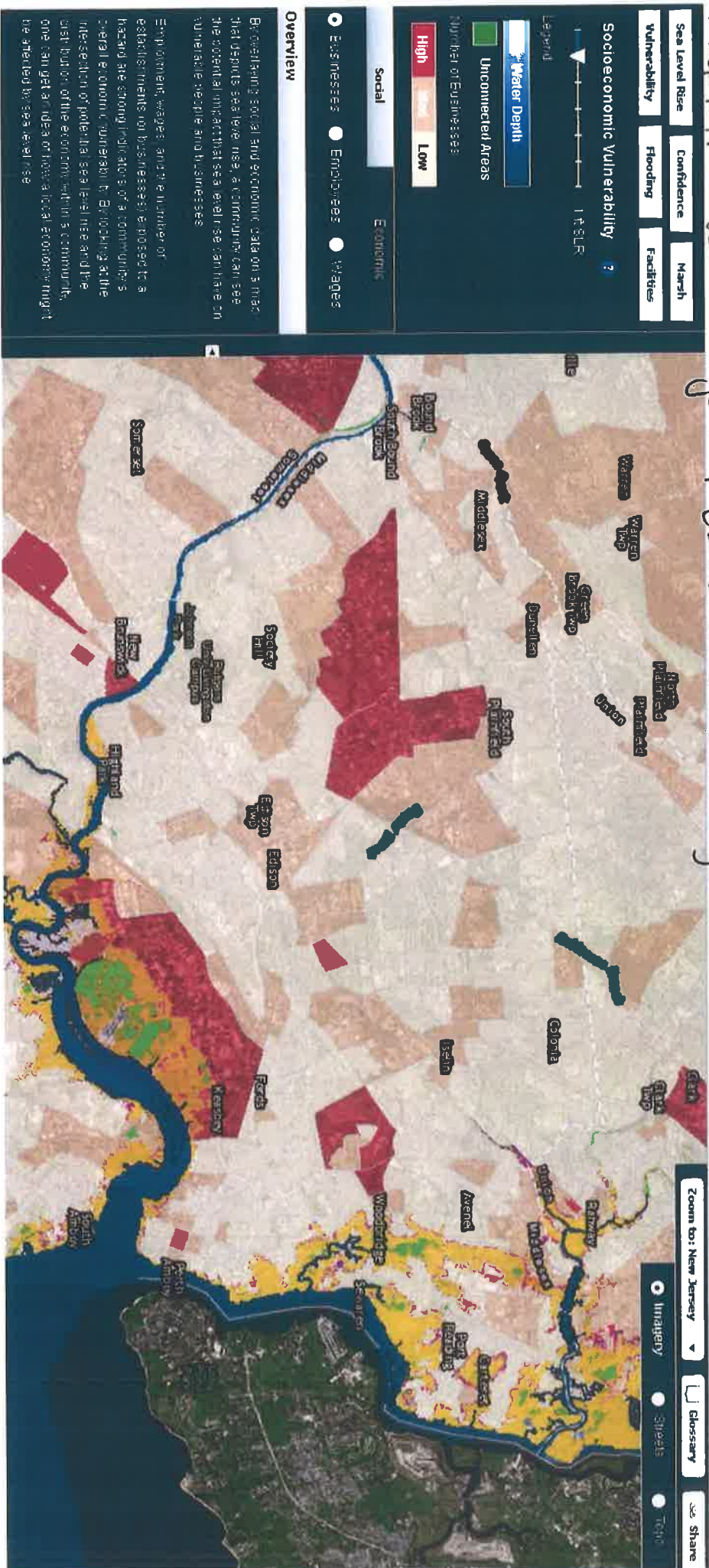


# Map titled: Woodbridge Twp Economic Vulnerability (Businesses) - Current MTHHS





Map titled: Woodbridge Top Economic Vulnerability (Businesses) SLR - 1ft. SLR





# Map titled: Woodbridge Township Economic Vulnerability (Businesses) SLR - 2ft. SLR

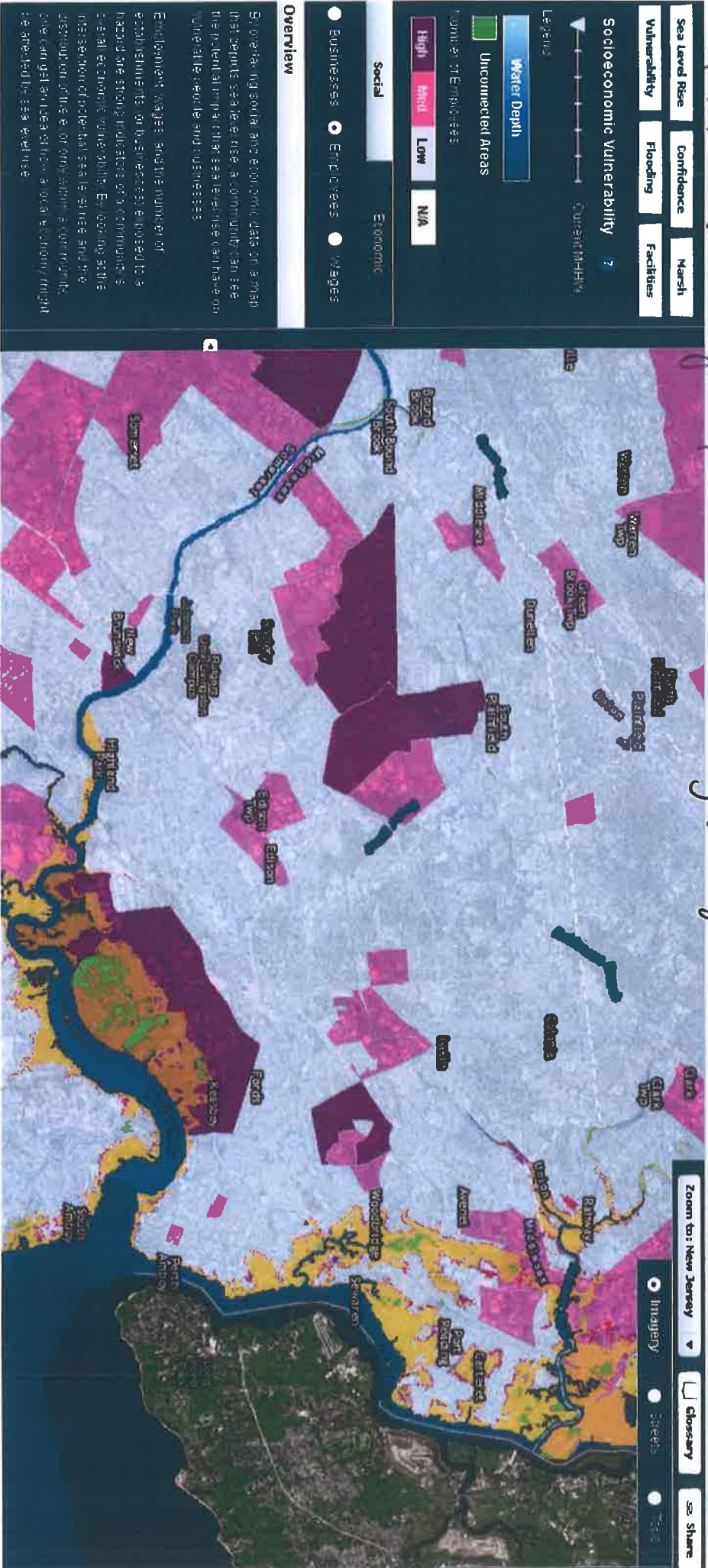








# Map titled: Doodbridge Top Economic Vulnerability (Employment) SLR - Current MHHW









# Map titled: Woodbridge Twp Economic Vulnerability (Employment) SLR - 2ft. SLR



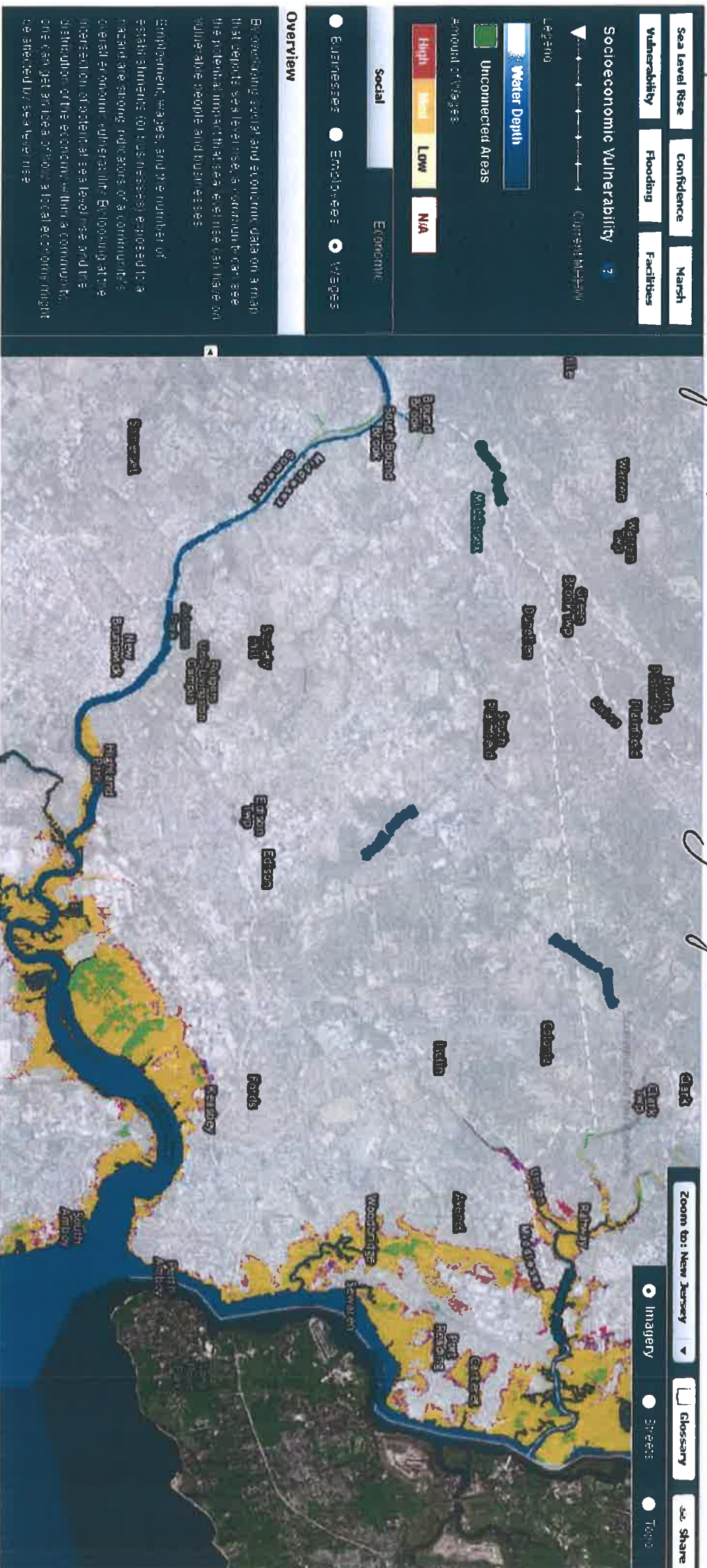


Map titled: Woodbridge Twp Economic Vulnerability (Employment) SLR - 3ft SLR





# Map titled: Woodbridge Twp Economic Vulnerability (years) SLR - Current MHHW





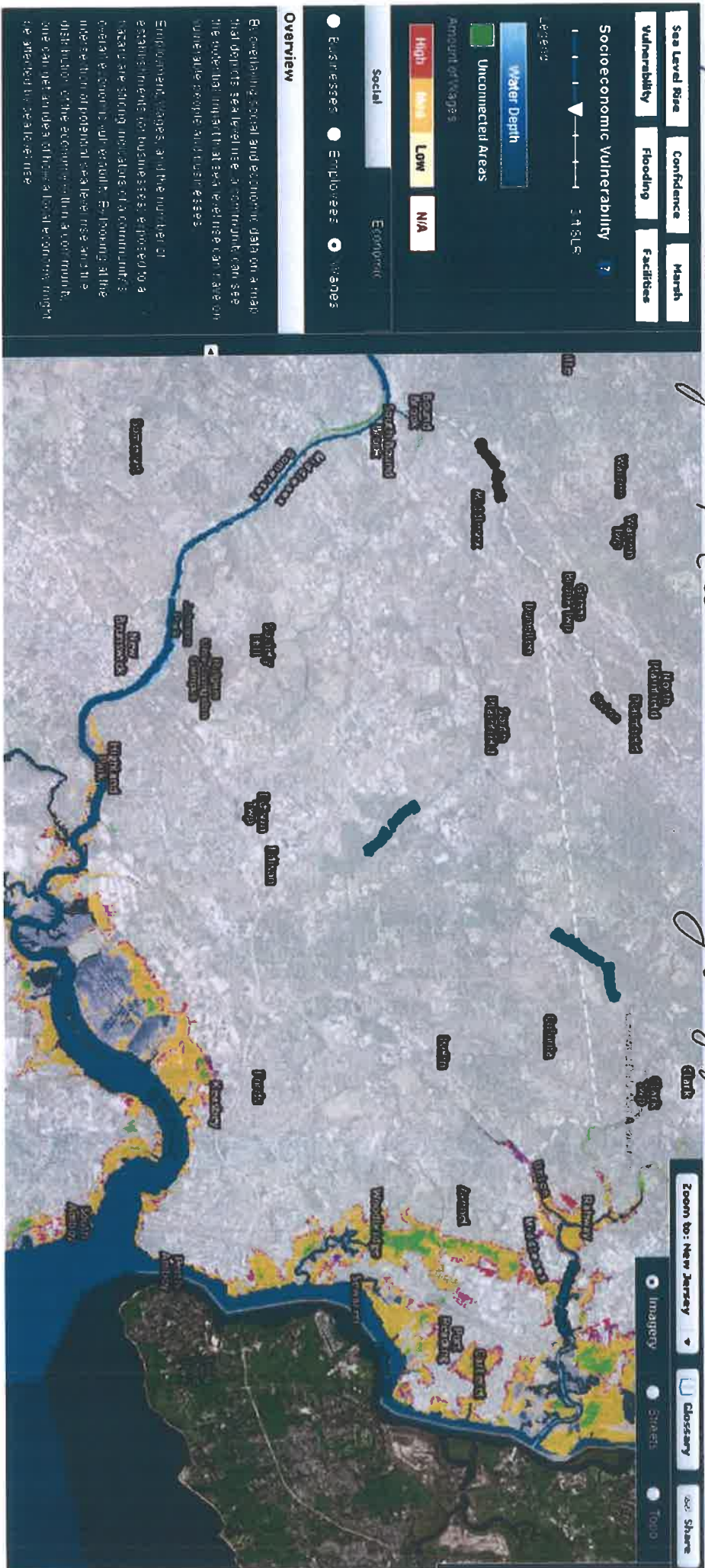








# Map titled: Woodbridge Twp Economic Vulnerability (Wages) SR - 3ft SR





Map titled: Woodbridge Top PIRN



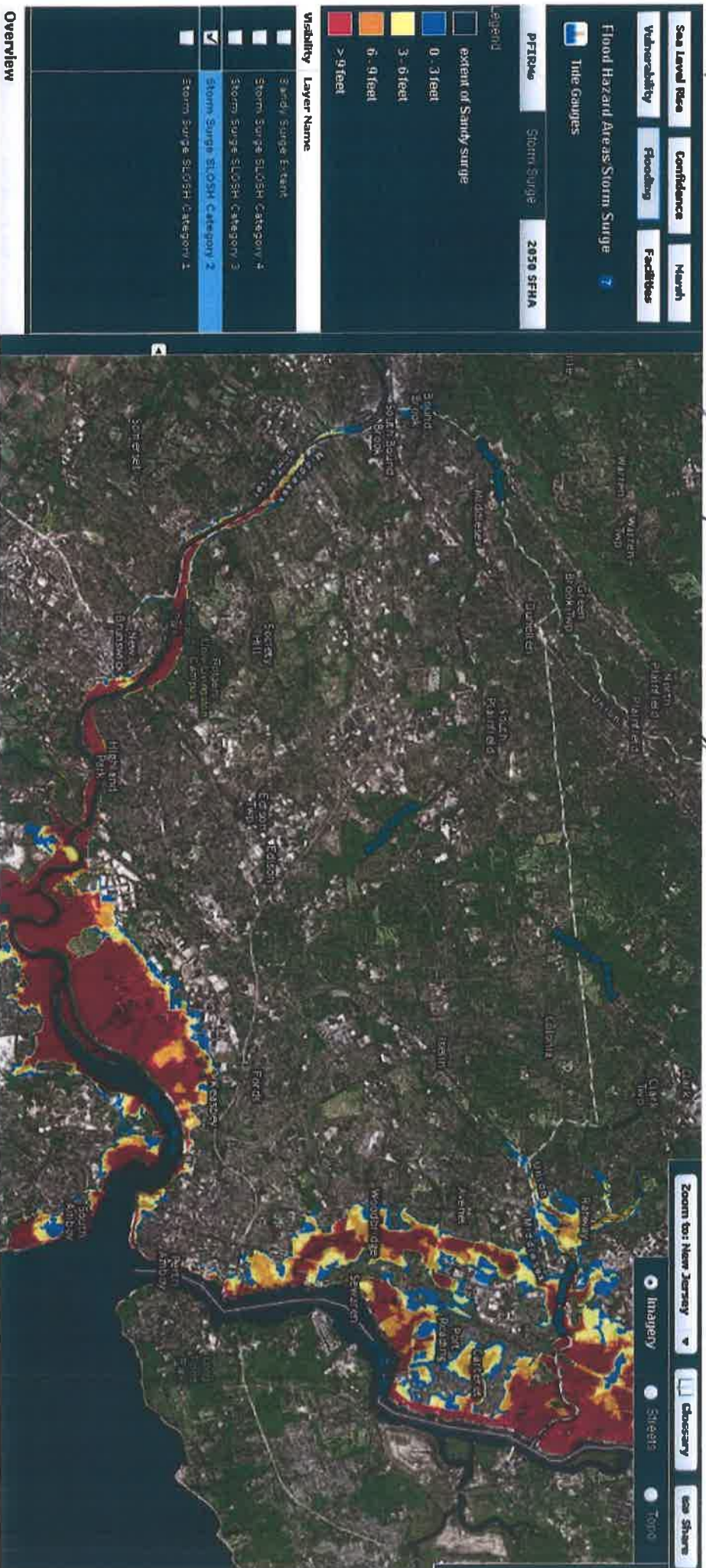


# Map titled: Woodbridge Twp Storm Surge SLOSH - Cat. 1





Map titled: Woodbridge Twp Storm Surge SLOSH - CAT. 2





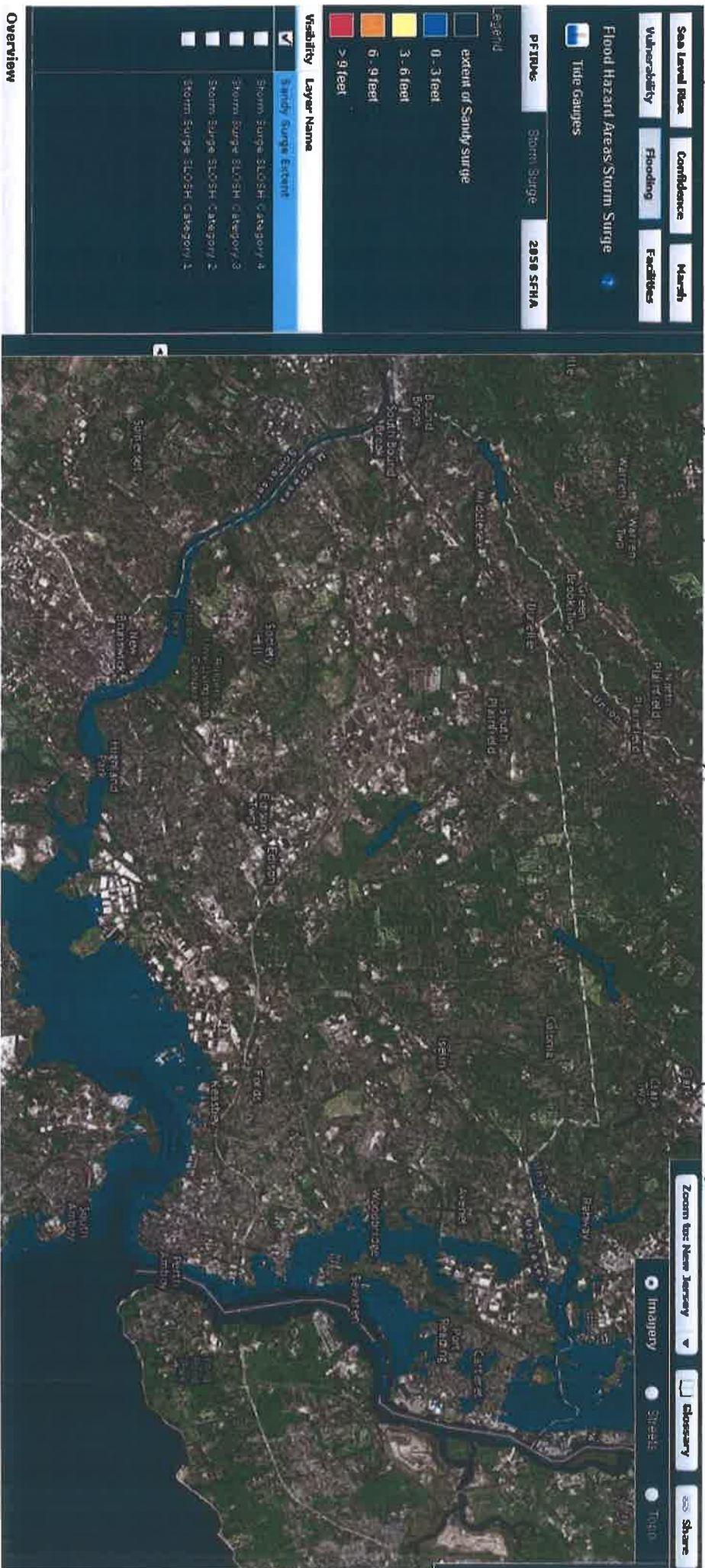








# Map titled: Woodbridge Twp Storm Surge SLOSH - Sandy Surge Extent





# Map titled: Woodbridge Twp. Natural Assets - Off. SLR





Map titled: Woodbridge Township Assets - 2ft. SR





**Sea Level Rise** **Confidence** **Marsh**

**Vulnerability** **Flooding** **Facilities**

**Marsh Impacts/Migration**

2 ft SLR

**Legend**

- unimpeded marsh retreat zone
- impeded marsh retreat zone
- marsh conversion: mud/sand flat
- marsh conversion: open water
- tidal marsh

Use the slider bar to see how various sea level rise scenarios may impact marsh distribution.

Tidal salt marshes are a characteristic landscape feature of the New Jersey's coastal bays, fringing both the back side of the barrier islands, as well as the mainland. Through the process of vertical accretion of sediment and organic matter, the tidal salt marsh surface will rise in relation to sea level, i.e., the marsh can continue to grow "up" into a rising sea. When sea level rises faster than marsh accretion, tidal marshes are drowned and replaced by mud/sand flats or open water. In addition to accreting vertically, salt marshes will migrate horizontally (i.e., landward) as sea level rises.

Those portions of New Jersey's coastal wetland complex that are free to retreat inland as part of the natural landward migration process were mapped and labeled as unimpeded marsh.

**Zoom to: New Jersey**

**Imagery** **Streets** **Topo**

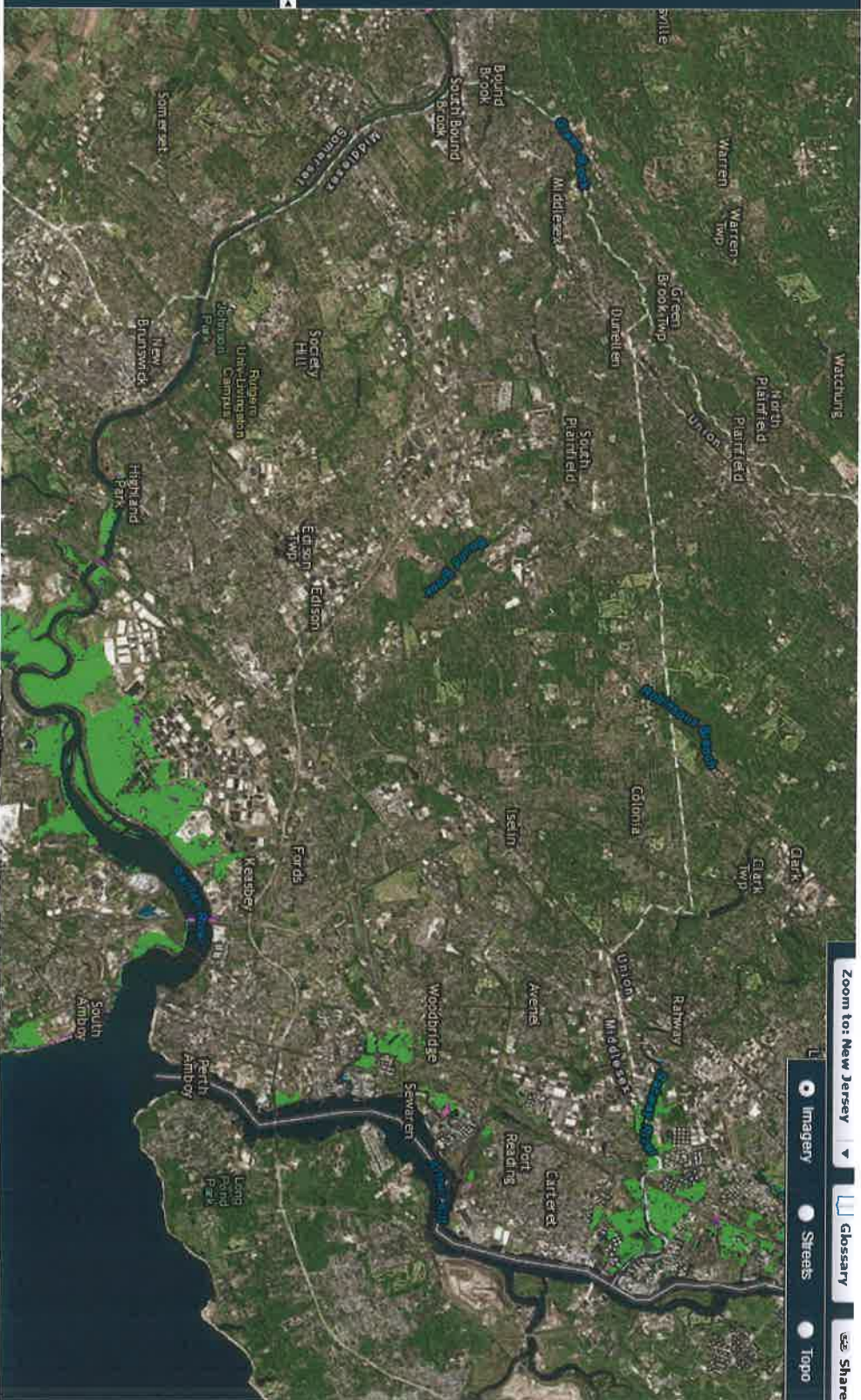
**Glossary** **Share**

[illegible]

Those portions of New Jersey's coastal wetland complex that are free to retreat inland as part of the natural landward migration process were mapped and labeled as "unimpeded marsh."



South Ambury





# Map titled: Woodbridge Twp. Natural Assets - 3ft. SLR

